

# Parts Manual

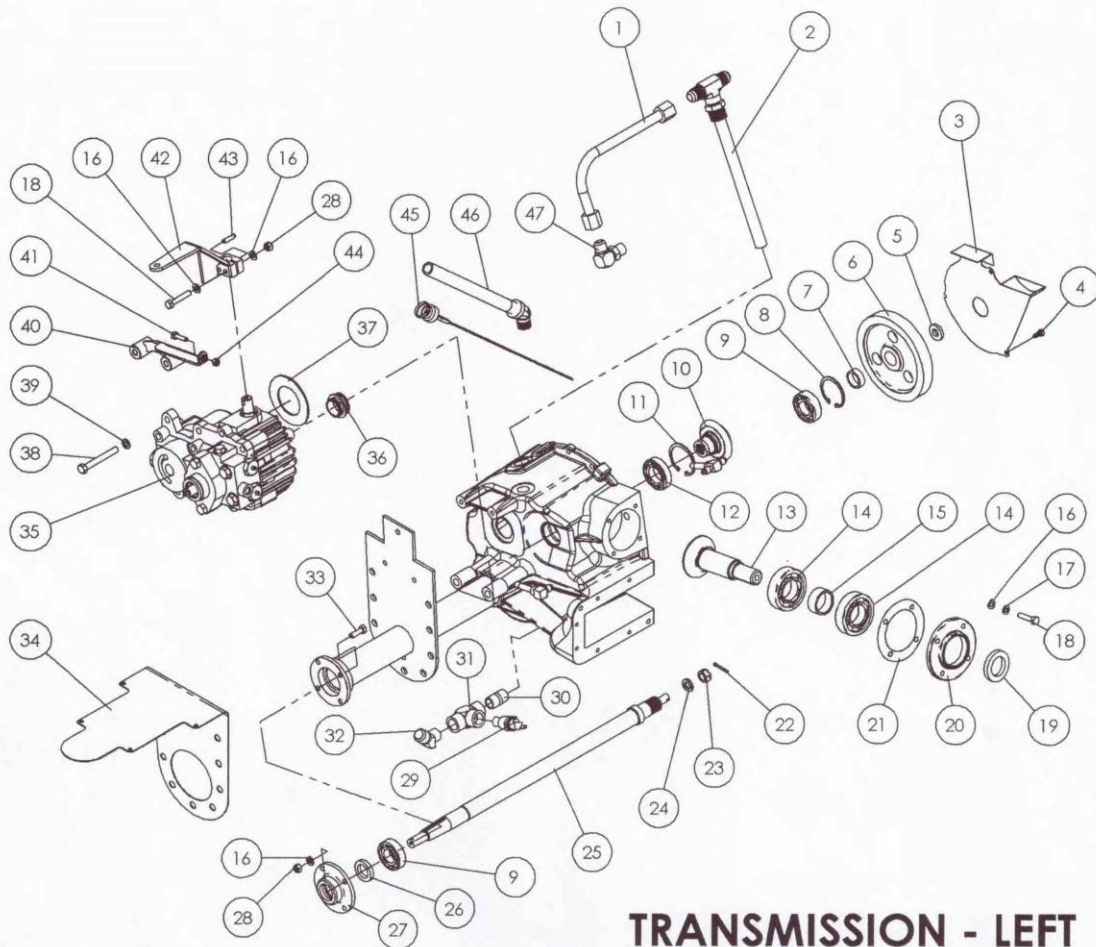


## Wilderness Renegade 300ZTR



**Remote Access  
Vehicles Corp.**

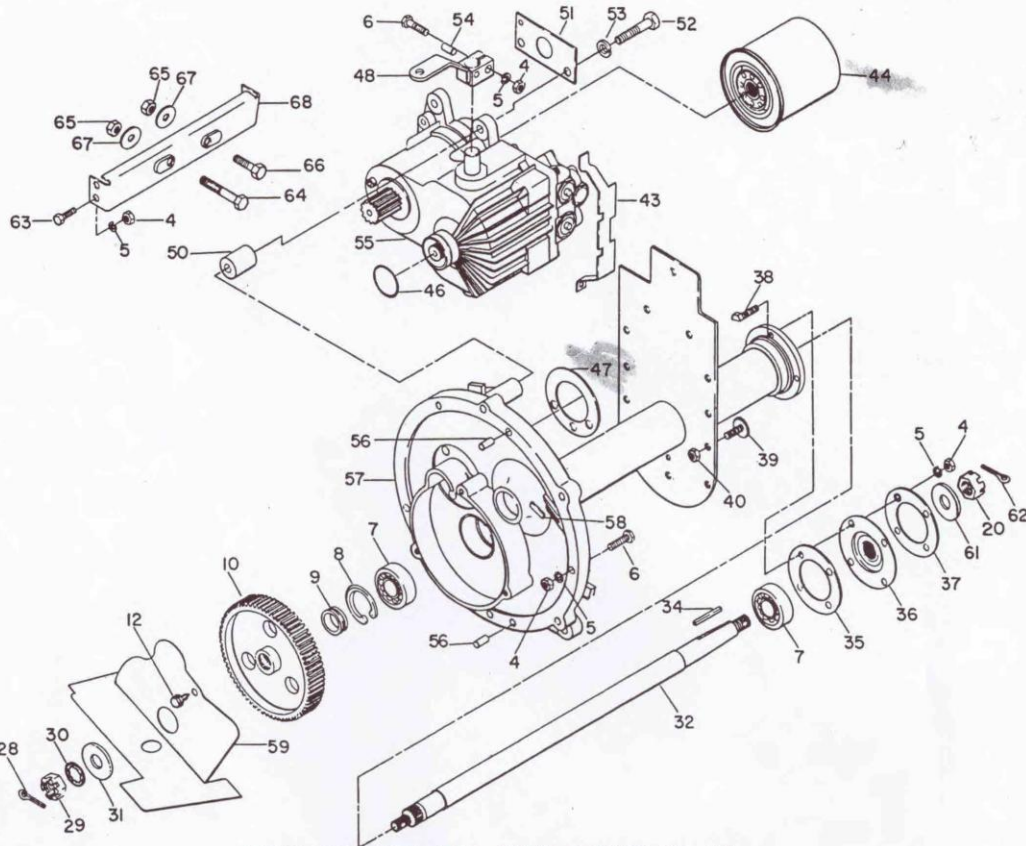
6769 W. Hwy 77  
Pence, WI 54550



## TRANSMISSION - LEFT

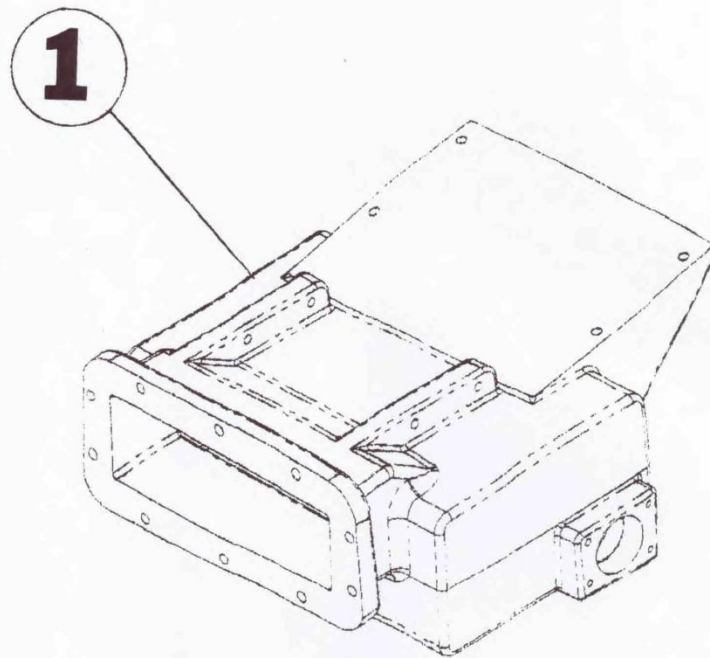
ITEM NO.	QTY.	PART NO.	DESCRIPTION	ITEM NO.	QTY.	PART NO.	DESCRIPTION
1	1	91100024	TUBE, CHARGE PUMP INLET, LEFT	25	1	88202101	SHAFT-TRANSMISSION
2	1	91100019	OIL SUCTION TUBE	26	1	88228603	SEAL, AXLE
3	1	88208900	WELDMENT, OIL DEFLECTOR	27	1	88228601	RETAINER, BEARING & SEAL
4	3	HCS1/4-20X.5Z	1/4-20 X 1/2" HEX SCREW	28	5	LKN5/16-18Z	5/16 METAL LOCK NUT
5	1	80918001	WASHER, TRANS AXLE - INTERNAL	29	1	82076301	SENDER-OIL TEMP INDICATOR
6	1	82068901	GEAR, DRIVE OUT	30	1	91100011	FITTING, SUMP RETURN PORT
7	1	82068601	SPACER-GEAR	31	1	91100012	FITTING, SUMP RETURN PORT
8	1	81508701	SNAP RING-52mm BORE	32	1	91100014	FITTING, SUMP RETURN PORT
9	2	81509301	BEARING, TYPE 6205	33	4	HCS5/16-18X1Z	5/16-18 X 1" HEX SCREW
10	1	82067701	GEAR-DRIVE IN	34	1	82074201	LEFT COVER, TRANSMISSION
11	1	81508702	SNAP RING-55mm BORE	35	1	88259300	HYDROSTAT, RIGHT
12	1	81509302	BEARING, TYPE 6006	36	1	88202313	COLLAR-LOCATING
13	1	82069001	GEAR, PINION	37	1	82069301	SEAL-HYDROSTAT
14	2	82075600	BEARING, TYPE 6207	38	4	HCS3/8-16X3Z	3/8-16 X 3" HEX SCREW
15	1	82084201	SPACER, BEARING	39	4	SW3/8Z	3/8 SPLIT LOCK WASHER
16	10	WSAE5/16Z	5/16 SAE WASHER	40	1	82069210	WELDMENT, LEFT HYDROSTAT STOP BRKT
17	4	SW5/16Z	5/16 SPLIT LOCK WASHER	41	1	HCS1/4-20X1Z	1/4-20 X 1" HEX SCREW
18	5	HCS5/16-18X1.75Z	5/16-18 X 1-3/4" HEX SCREW	42	1	88208650	WELDMENT, LEFT HYDROSTAT CONTROL
19	1	81448801	OIL SEAL, PINION GEAR	43	1	RP1/4X1Z	1/4 X 1 ROLL PIN
20	1	82075201	RETAINER, BEARING & OIL SEAL	44	1	LKN1/4-20Z	1/4-20 METAL LOCK NUT
21	AS REQ'D	82068802	GASKET-.005", RETAINER	45	1	88208800	DIPSTICK
22	1	CP1/8X1Z	1/8 X 1" COTTER PIN	45	1	82147000	DIPSTICK TUBE ASSEMBLY
23	1	SHN1/2-20Z	1/2-20 SLOTTED HEX NUT	46	1	91100001	FITTING, CHARGE PUMP INLET
24	1	SW1/2Z	1/2 SPLIT LOCK WASHER				



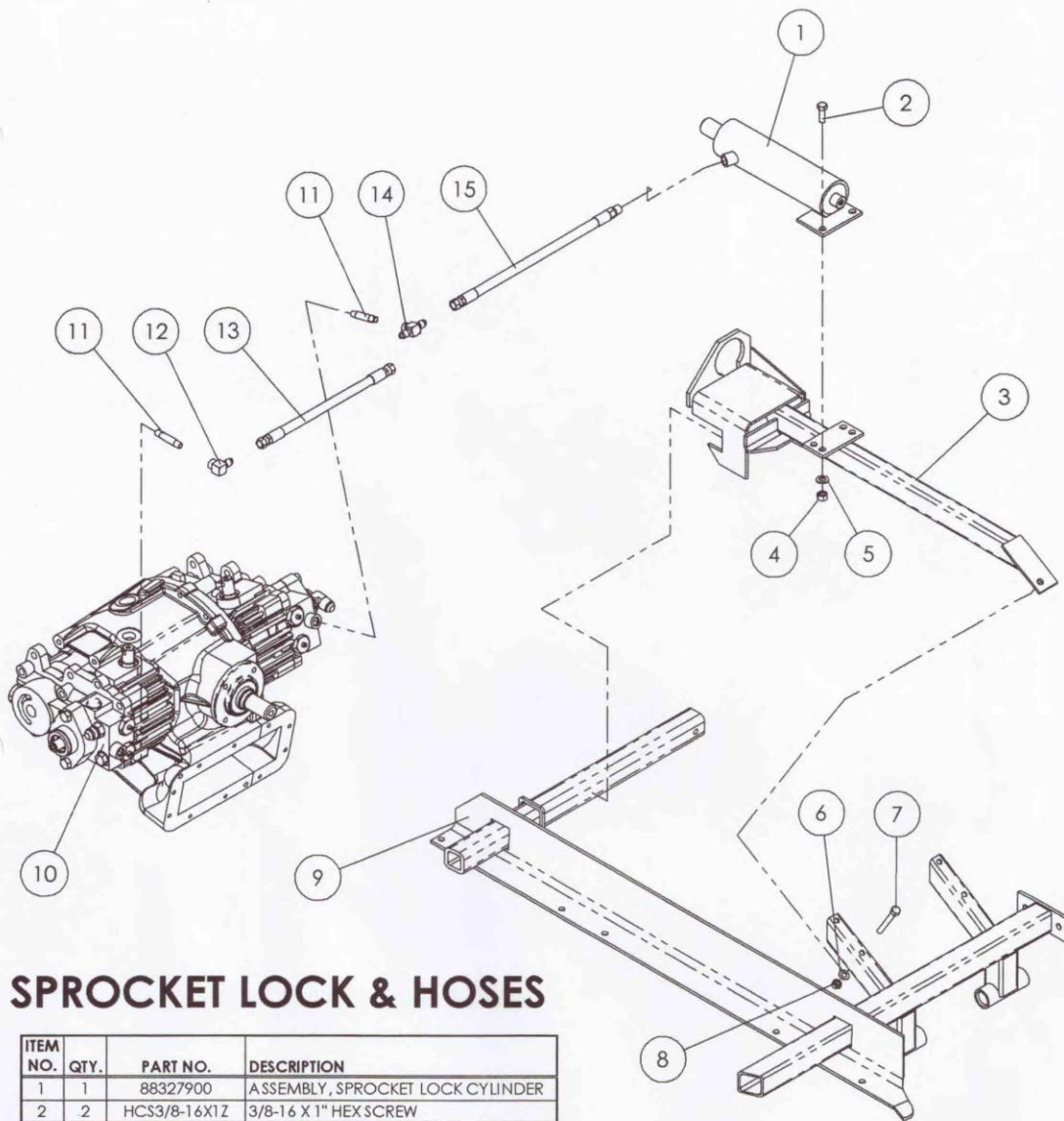


TRANSMISSION AND FINAL DRIVE (Con'd)

REF. NO.	PART NO.	DESCRIPTION	NO. REQ'D	REF. NO.	PART NO.	DESCRIPTION	NO. REQ'D
35	820696	Gasket, axle retainer .....	2	53	120177	Lockwasher, 3/8 .....	8
36	882286	Seal & retainer .....	2	54	315630	Pin, 1/4 x 1 .....	2
37	821433	Ring, retainer .....	1	55	882593	Trans., right hyd.—includes gaskets and filter (New) .....	1
38	806251	Screw, 5/16 .....	8				
39	821436	Screw, 5/16 scaling .....	24				
40	800290	Nut, 5/16 center lock .....	24				
41	820763	Sender, oil temp. indicator .....	1				
42	882026	Case, left .....	1	56	821332	Pin, dowel .....	2
43	821444	Clip, towing valve .....	2	57	882027	Case, right .....	1
44	820950	Filter, transmission .....	2	58	821461	Gasket, right trans. case .....	1
45	882592	Trans., left hyd.—includes gaskets and filter (New) .....	1	59	882090	Cover, right gear .....	1
				60	820694	Gasket, trans. cases .....	1
				61	809156	Washer, 5/8 (not used with 7 toothed sprockets) .....	2
				62	304636	Pin, cotter .....	2
46	821902	O-Ring, hydrostatic mtg. ....	2	63	306555	Screw, 5/16 .....	4
47	820693	Gasket, hydrostatic .....	2	64	551094	Screw, 3/8 .....	1
48	882086	Arm, control .....	2	65	306562	Nut, 3/8 .....	2
49	882088	Dipstick .....	1	66	306835	Screw, 3/8 .....	1
50	820692	Spacer, hydrostatic .....	4	67	306981	Washer 3/8 .....	2
51	821440	Hanger, trans. unit .....	2	68	882490	Bracket, control rod adj. ....	1
52	311213	Screw, 3/8 .....	8	69	882287	Seal & retainer .....	1



<b>1</b>	RESEVOIR-TRANSMISSION	
	PART NO: 88202604	MATL: AL 356-T6



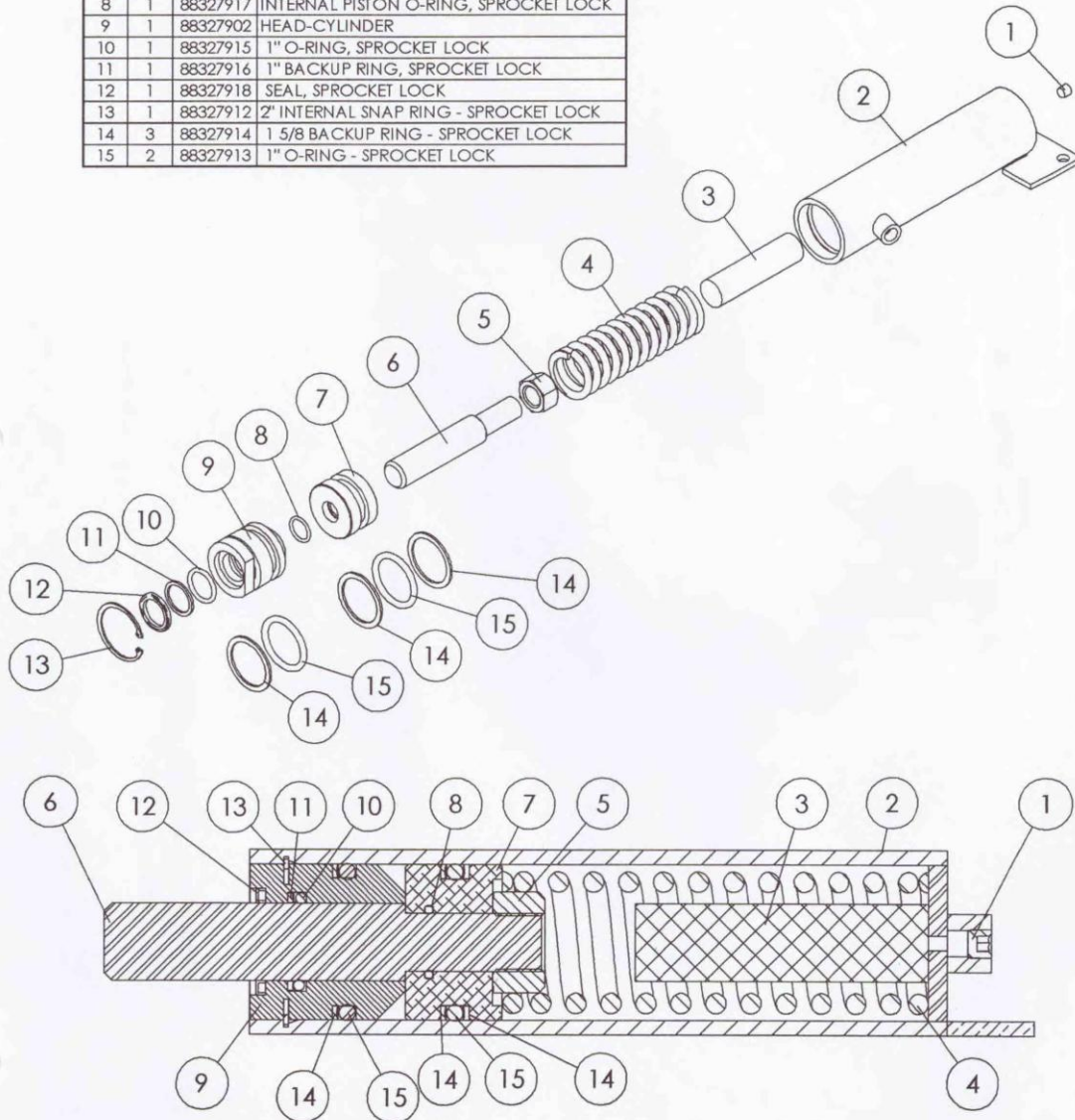
## SPROCKET LOCK & HOSES

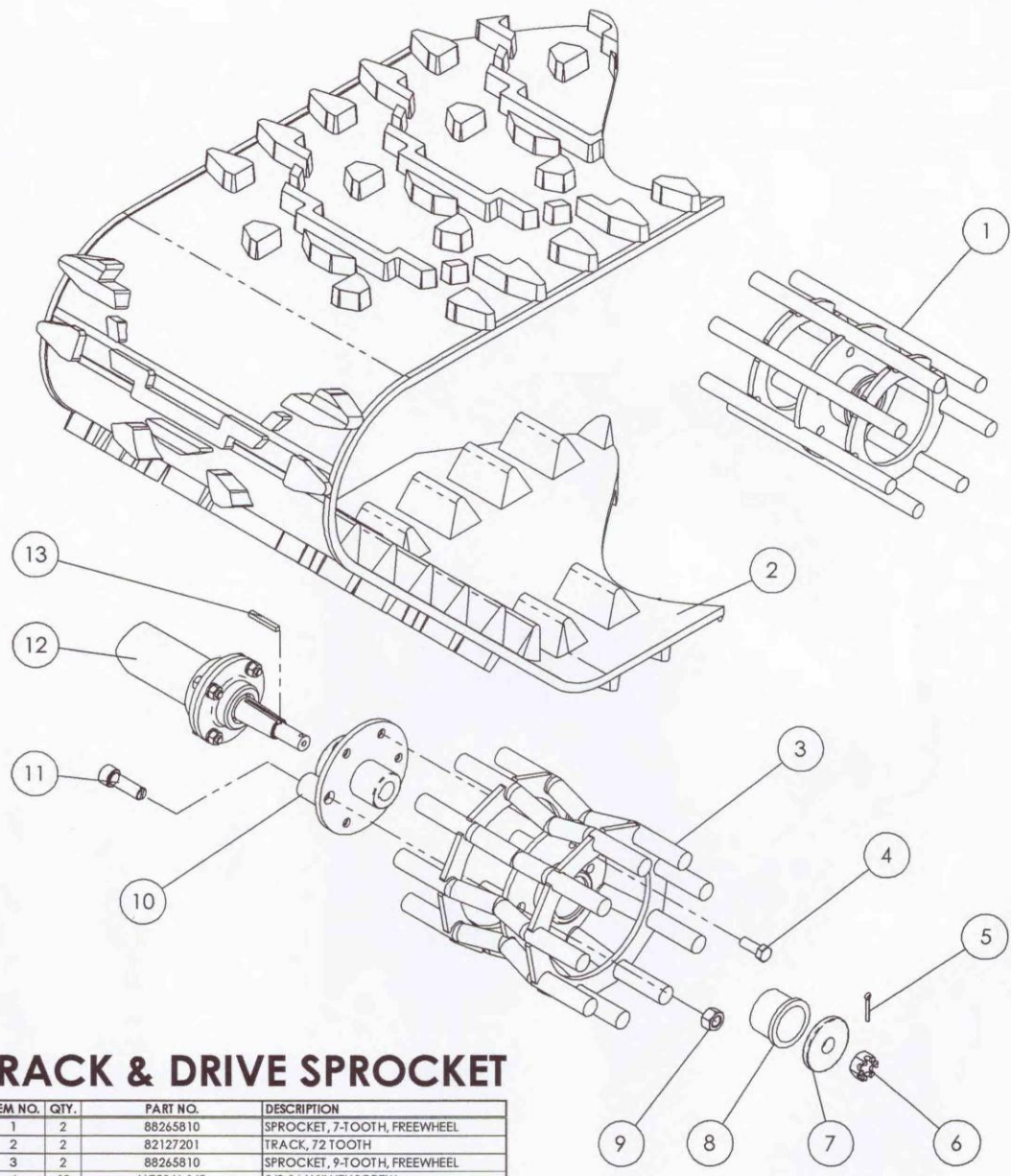
ITEM NO.	QTY.	PART NO.	DESCRIPTION
1	1	88327900	ASSEMBLY, SPROCKET LOCK CYLINDER
2	2	HCS3/8-16X1Z	3/8-16 X 1" HEX SCREW
3	1	88327700	WELDMENT, SPROCKET LOCK MOUNT
4	2	LKN3/8-16Z	3/8-16 METAL LOCK NUT
5	2	WSA E3/8Z	3/8 SAE WASHER
6	1	WSA E5/16Z	5/16 SAE WASHER
7	1	HCS5/16-18X2.5Z	5/16-18 X 2-1/2" HEX SCREW
8	1	LKN5/16Z	5/16-18 METAL LOCK NUT
9	1	88220710	WELDMENT, FRAME
10	1	88215400	TRANSMISSION
11	2	82493701	FITTING, PIPE NIPPLE, SPROCKET LOCK
12	1	82493601	FITTING, 90 DEGREE, SPROCKET LOCK
13	1	82491101	HYDROSTAT HOSE, SPROCKET LOCK
14	1	82493501	FITTING, T, SPROCKET LOCK
15	1	82491001	CYLINDER HOSE, SPROCKET LOCK



# SPROCKET LOCK ASSEMBLY

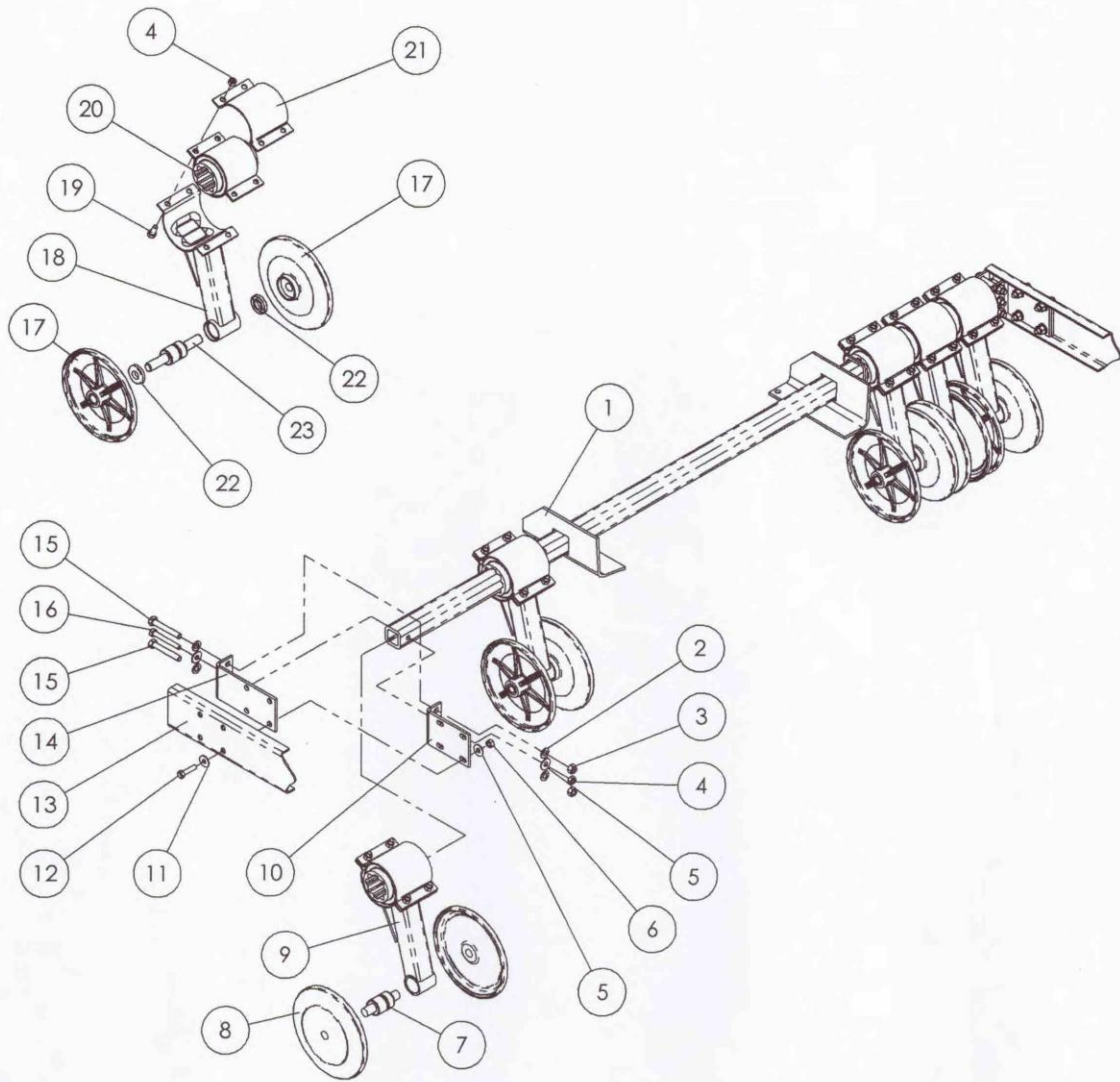
ITEM NO.	QTY.	PART NO.	DESCRIPTION
1	1	88327919	PLUG, SPROCKET LOCK CYLINDER
2	1	88327950	WELDMENT, SPROCKET LOCK TUBE
3	1	88327905	PISTON STOP, SPROCKET LOCK
4	1	88327901	SPRING-CYLINDER
5	1	88327911	NUT-3/4-16 SELF LOCKING
6	1	88327904	ROD-CYLINDER
7	1	88327903	PISTON-CYLINDER
8	1	88327917	INTERNAL PISTON O-RING, SPROCKET LOCK
9	1	88327902	HEAD-CYLINDER
10	1	88327915	1" O-RING, SPROCKET LOCK
11	1	88327916	1" BACKUP RING, SPROCKET LOCK
12	1	88327918	SEAL, SPROCKET LOCK
13	1	88327912	2" INTERNAL SNAP RING - SPROCKET LOCK
14	3	88327914	1 5/8" BACKUP RING - SPROCKET LOCK
15	2	88327913	1" O-RING - SPROCKET LOCK





## TRACK & DRIVE SPROCKET

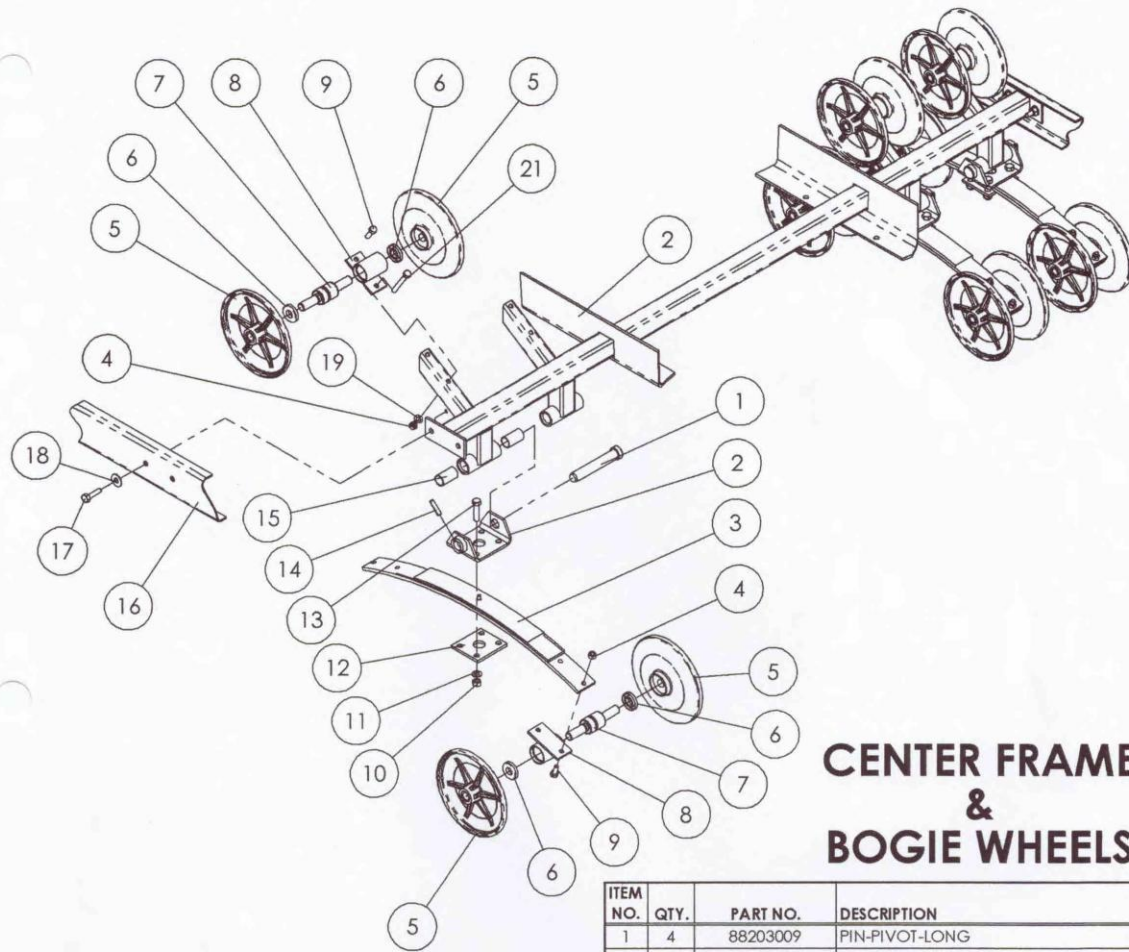
ITEM NO.	QTY.	PART NO.	DESCRIPTION
1	2	88265810	SPROCKET, 7-TOOTH, FREEWHEEL
2	2	82127201	TRACK, 72 TOOTH
3	2	88265810	SPROCKET, 9-TOOTH, FREEWHEEL
4	10	HCS3/6-16Z	3/8-16 X 1" HEX SCREW
5	2	CP1/8X1Z	1/8 X 1" COTTER PIN
6	2	SHNS/8-18Z	5/8-18 SLOTTED HEX NUT
7	2	88265854	WASHER, HUB
8	2	88265850	BUSHING, HUB
9	2	NY 1/2-13Z	1/2-13 NY LOCK NUT
10	2	88265892	HUB WELDMENT, FREEWHEEL SPROCKET
11	2	88265863	PLUNGER, FREEWHEEL SPROCKET STOP
12	1	88215400	TRANSMISSION ASSEMBLY
13	2	80587501	KEY, DRIVE SPROCKET



## FRONT FRAME & BOGIE WHEELS

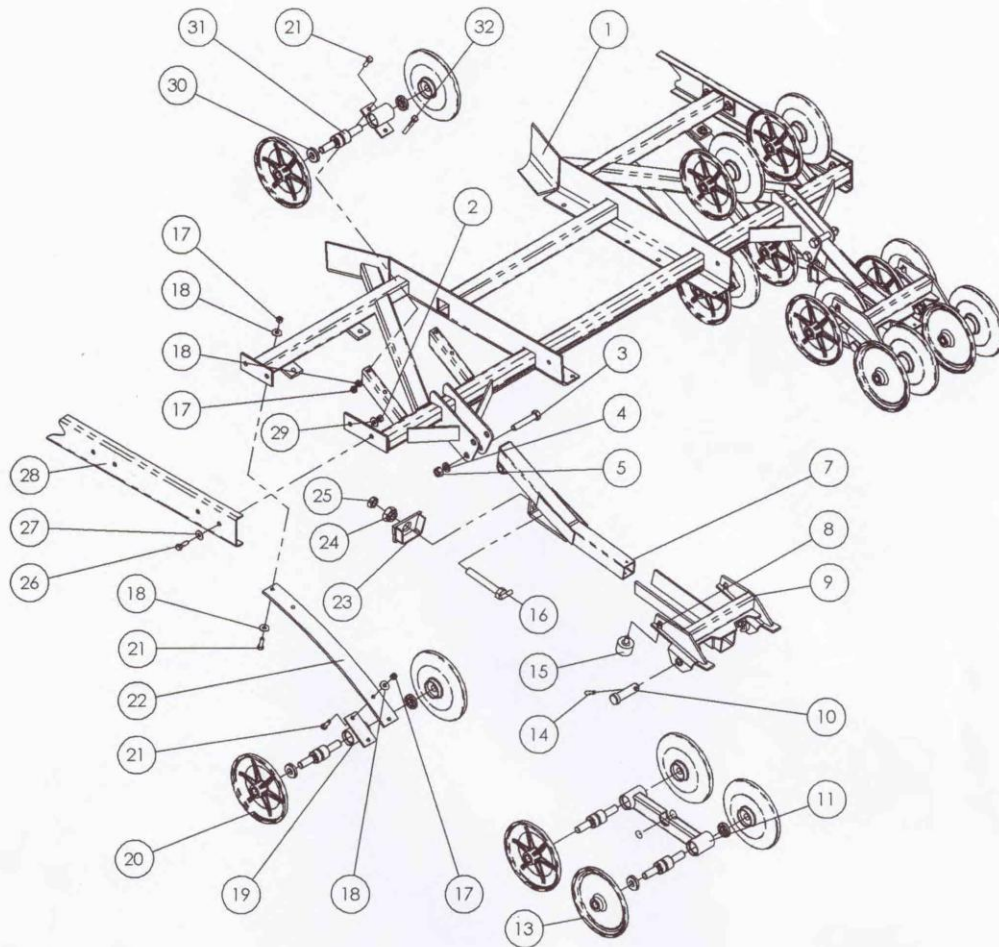
ITEM NO.	QTY.	PART NO.	DESCRIPTION	ITEM NO.	QTY.	PART NO.	DESCRIPTION
1	1	88220710	FRAME	13	2	82064802	CHASSIS SIDE RAIL, ALUMINUM
2	8	WSA E3/8Z	3/8 SAE WASHER	14	2	82065101	BRACKET-OUTER
3	4	LKN3/8-16Z	3/8-16 METAL LOCK NUT	15	4	HCS3/8-16X2.5Z	3/8-16 X 2-1/2 HEX SCREW
4	26	LKN5-16-18Z	5/16-18 METAL LOCK NUT	16	2	HCS5/16-18X2.5Z	5/16 X 2-1/2 HEX SCREW
5	12	W5/16Z	5/16 STANDARD WASHER	17	8	82067111	WHEEL-BOGIE ALUMINUM
6	8	NY5/16-18	5/16-18 NYLOCK NUT	18	4	88203800	SUSPENSION ARM, TORSILASTIC
7	2	82067502	BEARING, CENTER TORSILASTIC WHEEL	19	24	HCS5/16-18X.75Z	5/16-18 X 3/4" HEX SCREW
8	4	82067112	WHEEL, CENTER TORSILASTIC	20	6	88200700	TORSILASTIC SPRING
9	2	88203910	SUSPENSION ARM, CENTER TORSILASTIC	21	6	88203802	COVER-UPPER TORSILASTIC
10	2	82064901	BRACKET, INNER	22	8	82071901	SEAL, BOGIE WHEEL
11	8	WH5/16Z	5/16 HEAVY WASHER	23	4	82067501	BEARING, BOGIE WHEEL
12	8	HCS5/16-18X1.25Z	5/16-18 X 1-1/4 HEX SCREW				





## CENTER FRAME & BOGIE WHEELS

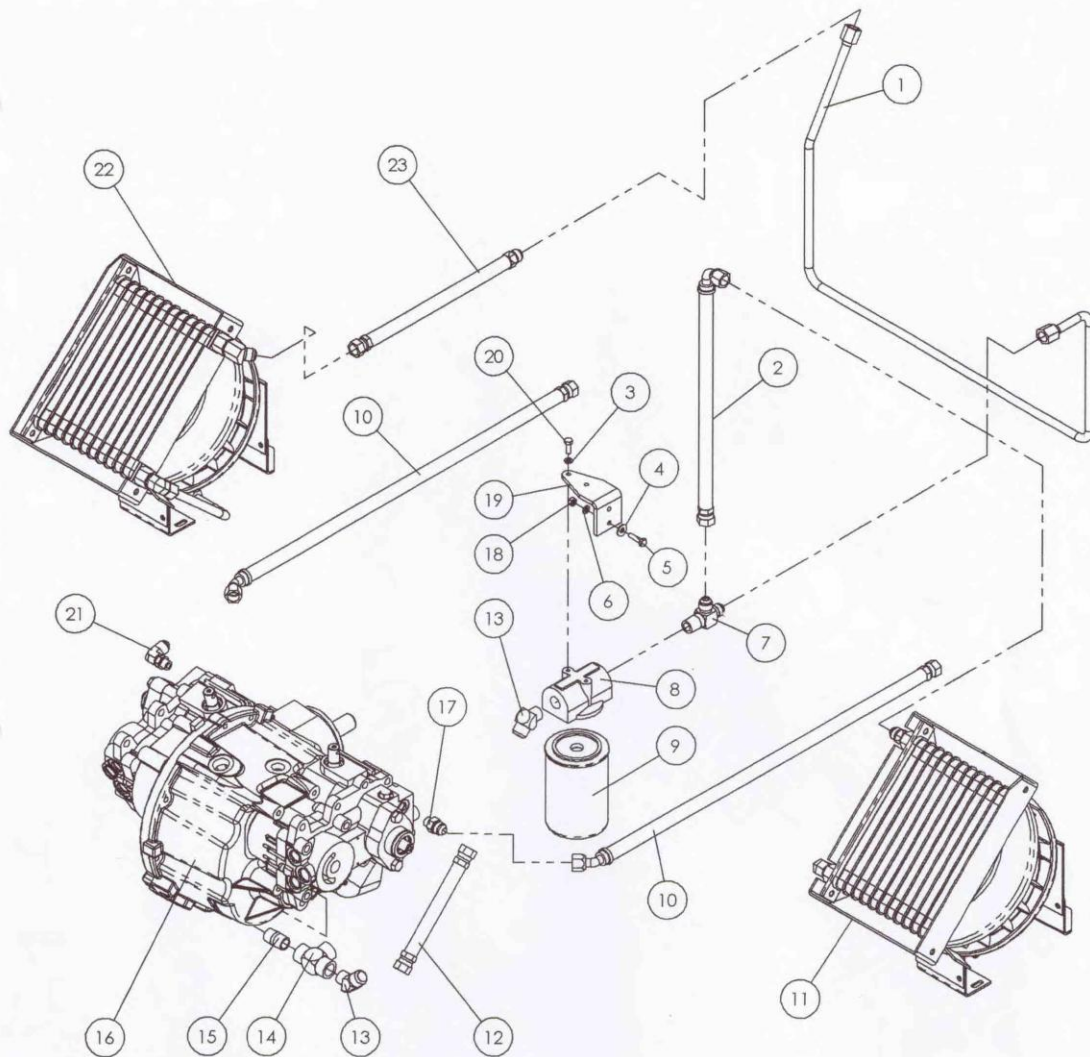
ITEM NO.	QTY.	PART NO.	DESCRIPTION
1	4	88203009	PIN-PIVOT-LONG
2	4	88203014	BRACKET-CENTER PIVOT
3	4	82070802	SPRING ASSEMBLY
4	24	LKN5/16-18Z	5/16-18 METAL LOCK NUT
5	24	82067111	WHEEL-BOGIE ALUMINUM
6	24	82071901	SEAL, BOGIE WHEEL
7	12	82067501	BEARING-BOGIE WHEEL
8	12	88203401	MOUNT-BEARING
9	20	HCS5/16-18X1Z	5/16-18 X 1" HEX SCREW
10	16	LKN3/8-16Z	3/8-16 METAL LOCK NUT
11	16	WSAE3/8Z	3/8 SAE WASHER
12	4	82070901	PLATE-RETAINING
13	16	HCS3/8X1.50Z	3/8-16 X 1-1/2" HEX SCREW
14	4	RP5/16X1.25Z	5/16 X 1-1/4" ROLL PIN
15	8	88203905	BUSHING-PIVOT
16	2	82064802	CHASSIS SIDE RAIL, ALUMINUM
17	4	HCS5/16-18X1.25	5/16-18 X 1-1/4" HEX SCREW
18	4	WH5/16Z	5/16 HEAVY WASHER
19	8	WSAE5/16Z	5/16 SAE WASHER
20	4	W5/16Z	5/16 STANDARD WASHER
21	4	HCS5/16-18X2.25	5/16-18 XH 2-1/4" HEX SCREW



## REAR FRAME & BOGIE WHEELS

ITEM NO.	QTY.	PART NO.	DESCRIPTION	ITEM NO.	QTY.	PART NO.	DESCRIPTION
1	1	88220710	FRAME WELDMENT	17	24	LKN5/16-18Z	5/16-18 METAL LOCK NUT
2	8	NY5/16-18Z	5/16-18 NYLOCK NUT	18	24	WSAE5/16Z	5/16" SAE WASHER
3	6	HCS1/2-13X2.5Z	1/2-13 X 2-1/2" HEX SCREW	19	8	88203500	WELDMENT, BEARING HOUSING
4	6	SW1/2Z	1/2" SPLIT LOCK WASHER	20	24	82067111	BOGIE WHEEL, ALUMINUM
5	6	LKN1/2-13Z	1/2-13 METAL LOCK NUT	21	34	HCS5/16-18X1Z	5/16-18 X 1" HEX SCREW
6	2	CP1/8X2Z	1/8 X 2" COTTER PIN	22	4	82070806	SPRING, SINGLE LEAF
7	2	88203300	WLDMT, REAR CARRIER ARM	23	2	88229200	WLDMT, TRACK TENSIONER CAP
8	4	LKN3/8-16Z	3/8-16 METAL LOCK NUT	24	2	82145501	NUT, TRACK TENSIONER
9	2	88203200	WELDMENT, REAR CARRIER	25	2	JN5/8-11Z	5/8-11 JAM NUT
10	4	88203008	PIVOT PIN, SHORT	26	8	HCS5/16-18X1.25Z	5/16-18 X 1-1/4" HEX SCREW
11	4	88203000	WELDMENT, PIVOT	27	8	WH5/16Z	5/16 HEAVY WASHER
12	4	88203004	BUSHING, PIVOT	28	2	82064802	CHASSIS SIDE RAIL, ALUMINUM
13	4	82067110	BOGIE WHEEL, STEEL	29	8	W5/16Z	5/16 STANDARD WASHER
14	4	RP5/16X1.25	5/16 X 1-1/4" ROLL PIN	30	32	82071901	SEAL, BOGIE WHEEL
15	4	82140001	BUMPER, REAR WHEEL	31	16	82067501	BEARING, BOGIE WHEEL
16	2	88242601	BOLT, TRACK TENSIONER	32	4	HCS5/16-18X2.5Z	5/16-18 X 2-1/2" HEX SCREW

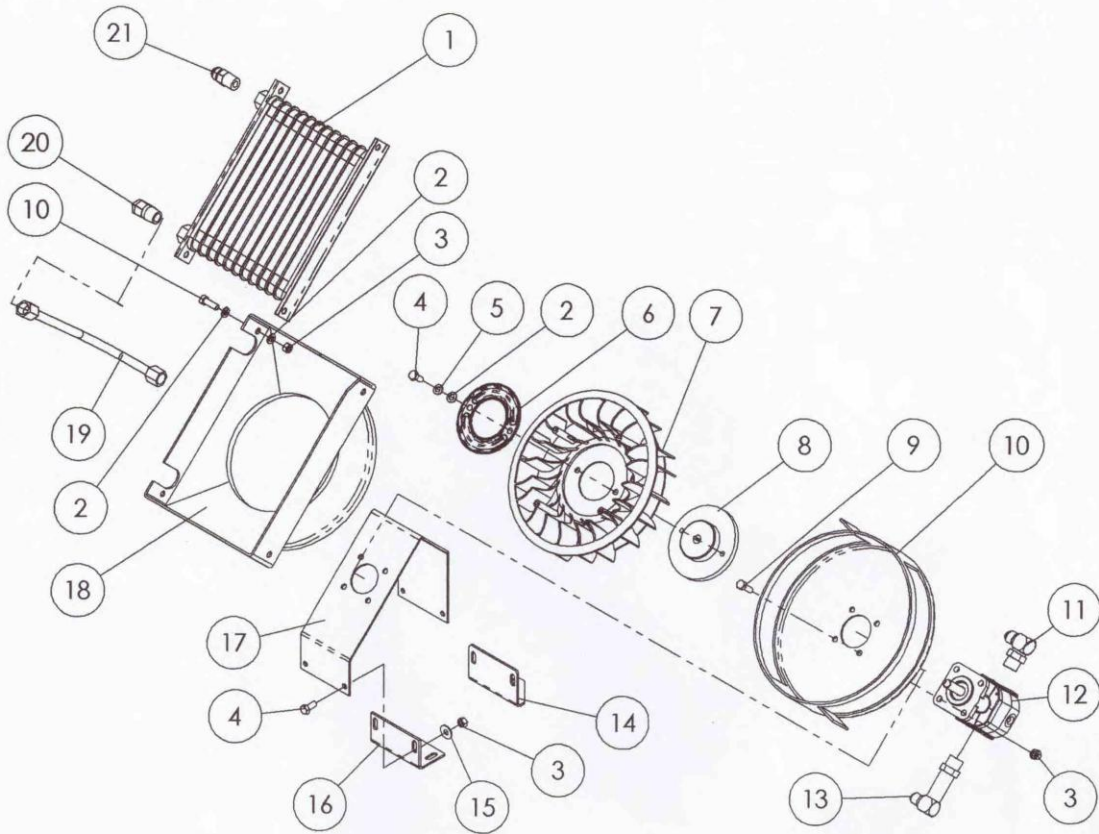




## HYDRAULIC SYSTEM

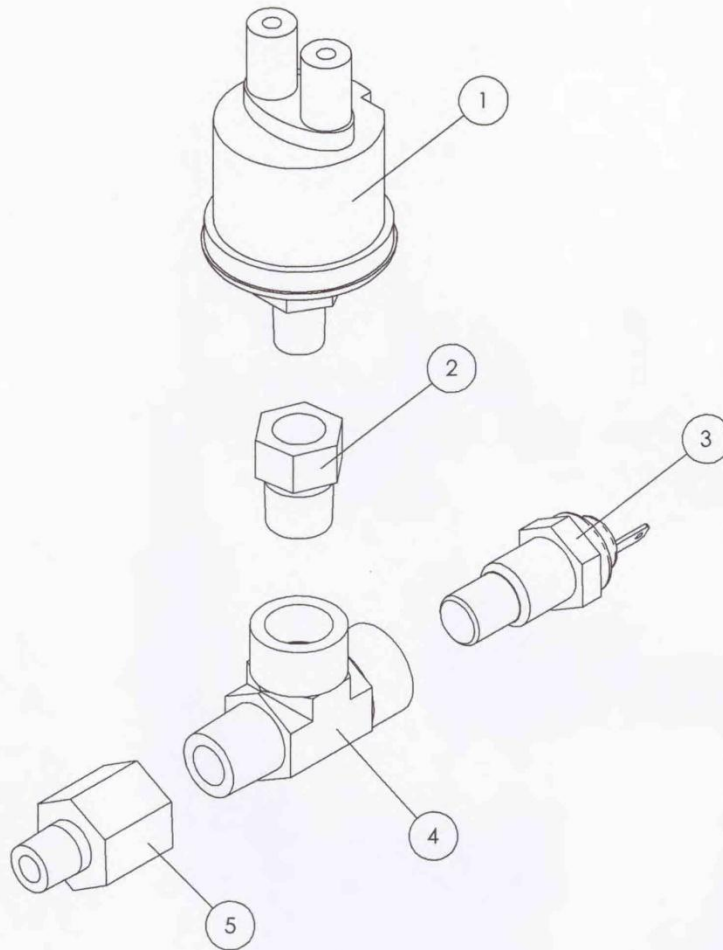
ITEM NO.	QTY.	PART NO.	DESCRIPTION	ITEM NO.	QTY.	PART NO.	DESCRIPTION
1	1	91100020	TUBE, COOLER TO FILTER	13	2	91100014	FITTING, SUMP RETURN, 45
2	1	91100016	HOSE, COOLER OUTLET TO FILTER INLET, LEFT	14	1	91100012	FITTING, SUMP RETURN, "T"
3	2	SW1/4Z	1/4 SPLIT LOCK WASHER	15	1	91100011	FITTING, SUMP RETURN, PIPE NIPPLE
4	2	82142602	1/4 SEALING WASHER	16	1	88215400	TRANSMISSION
5	1	HCS1/4-20X1Z	1/4-20 X 1" HEX SCREW	17	1	91100002	FITTING, CHARGE OUTLET, LEFT
6	2	WSAE1/4Z	1/4 SAE WASHER	18	2	LKN1/4-20Z	1/4-20 METAL LOCK NUT
7	1	91100004	FITTING, FILTER INLET	19	1	82095003	BRACKET, OIL FILTER MOUNT
8	1	82095002	MOUNT, OIL FILTER	20	2	HCS1/4-20X.75Z	1/4-20 X 3/4" HEX SCREW
9	1	82095001	OIL FILTER	21	2	91100025	FITTING, CHARGE OUTLET, RIGHT
10	2	91100015	HOSE, CHARGE TO MOTOR INLET	22	1	88270800	OIL COOLER ASSEMBLY, LEFT
11	1	88270800	OIL COOLER ASSEMBLY, LEFT	23	1	91100017	HOSE, COOLER OUTLET TO FILTER TUBE
12	1	91100018	HOSE, FILTER OUTLET TO SUMP				





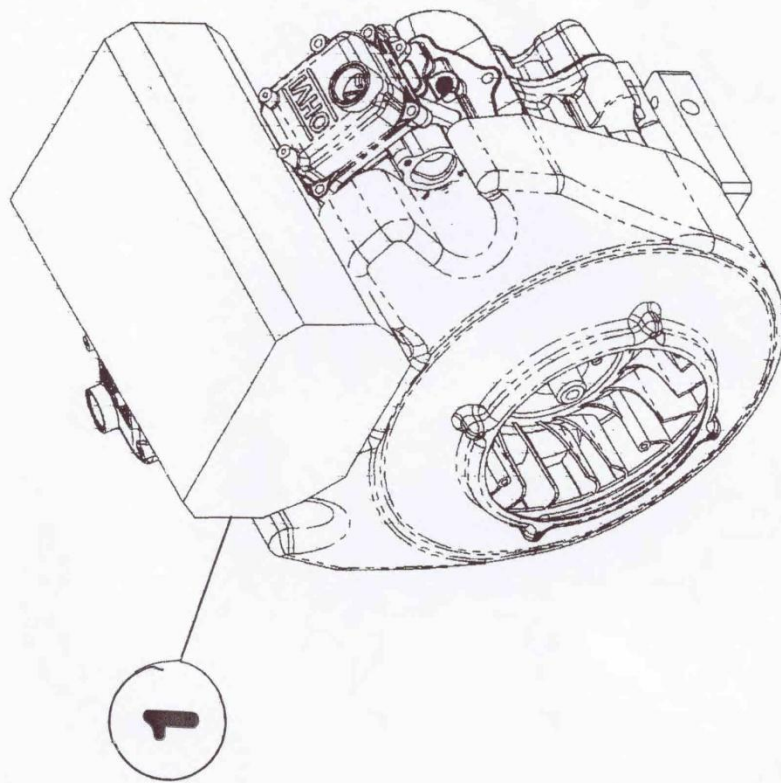
## OIL COOLER ASSEMBLY

ITEM NO.	QTY.	PART NO.	DESCRIPTION
1	1	88270806	OIL COOLER
2	10	WSAE5/16Z	5/16 SAE WASHER
3	12	LKN5/16-18Z	5/16-18 METAL LOCK NUT
4	6	HCS5/16-18X.75Z	5/16-18 X 3/4" HEX SCREW
5	2	SW5/16Z	5/16 SPLIT LOCK WASHER
6	1	16210502	FAN PLATE
7	1	16210501	FAN
8	1	88270804	HUB, FAN MOUNT
9	8	HCS5/16-18X1Z	5/16-18 X 1" HEX SCREW
10	1	88270802	COVER-FAN HOUSING
11	1	91100008	FITTING, MOTOR INLET
12	1	90000800	MOTOR, HYDRAULIC FAN
13	1	91100009	FITTING, MOTOR OUTLET
14	1	88270811	BRACKET, LOWER OIL COOLER MOUNT
15	4	W5/16Z	5/16 STANDARD WASHER
16	1	88270807	BRACKET, LOWER OIL COOLER MOUNT
17	1	88270810	BRACKET-FAN HOUSING
18	1	88270801	HOUSING, OIL COOLER, LEFT
		88270812	HOUSING, OIL COOLER, RIGHT
19	1	91100021	TUBE, MOTOR TO COOLER, LEFT
		91100022	TUBE, MOTOR TO COOLER, RIGHT
20	1	91100006	FITTING, COOLER INLET
21	1	91100026	FITTING, COOLER OUTLET, LEFT
		91100007	FITTING, COOLER OUTLET, RIGHT



## ENGINE OIL SENDING UNITS

ITEM NO.	QTY.	PART NO.	DESCRIPTION
1	1	81676453	DUAL SENDING UNIT - TEMP GAUGE/LIGHT
2	1	81676458	1/4" TO 3/8" REDUCER
3	1	81676455	SENDING UNIT: ENGINE OIL "OVER-TEMP"
4	1	81676456	3/8" MALE/FEMALE/FEMALE T-FITTING
5	1	81676457	3/8" TO 1/4" REDUCER

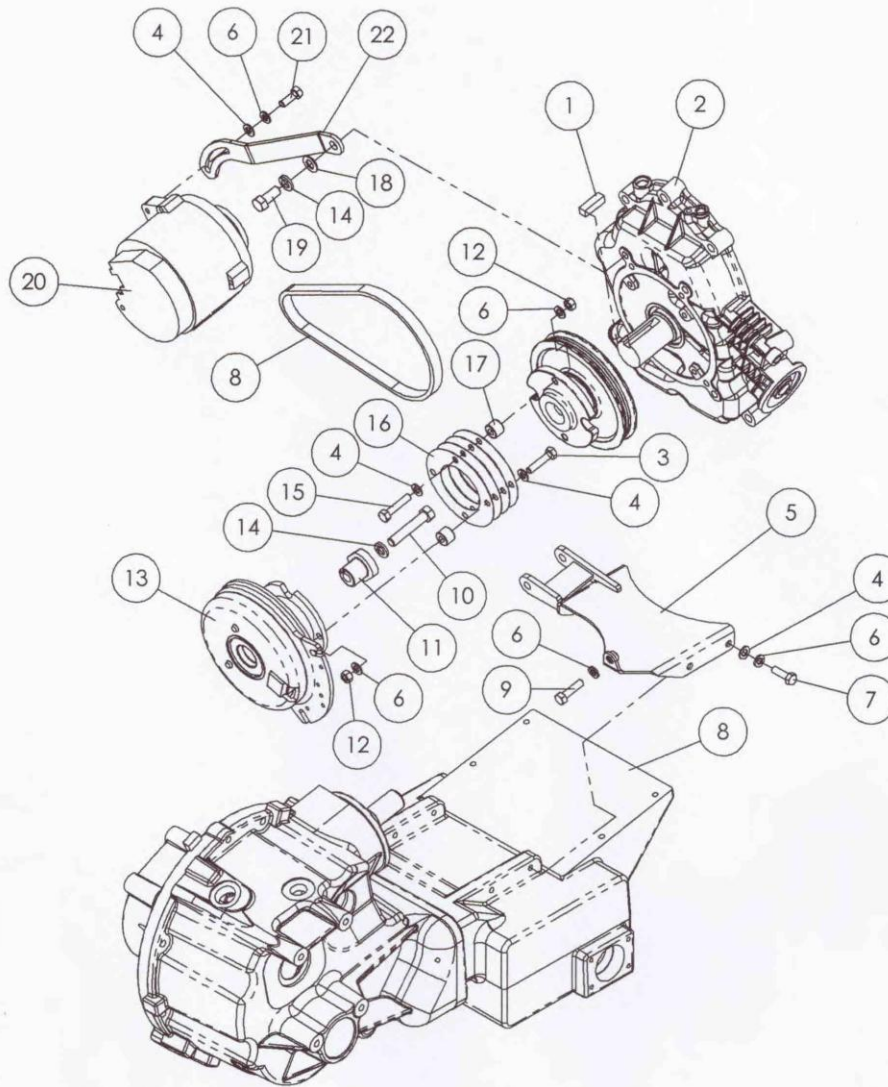


**1**

ENGINE-29 H.P.

PART NO. 8900000



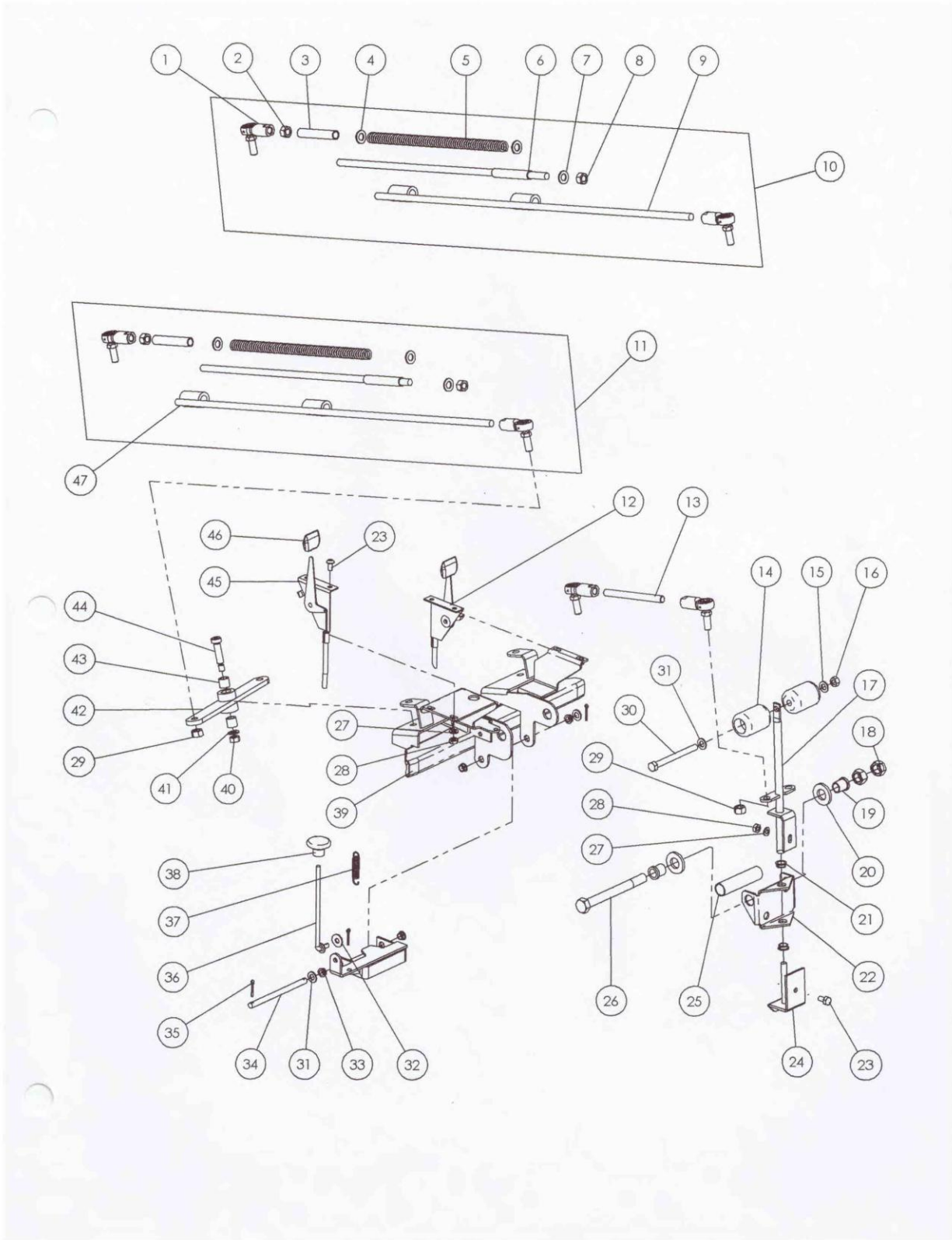


## DRIVETRAIN COUPLING

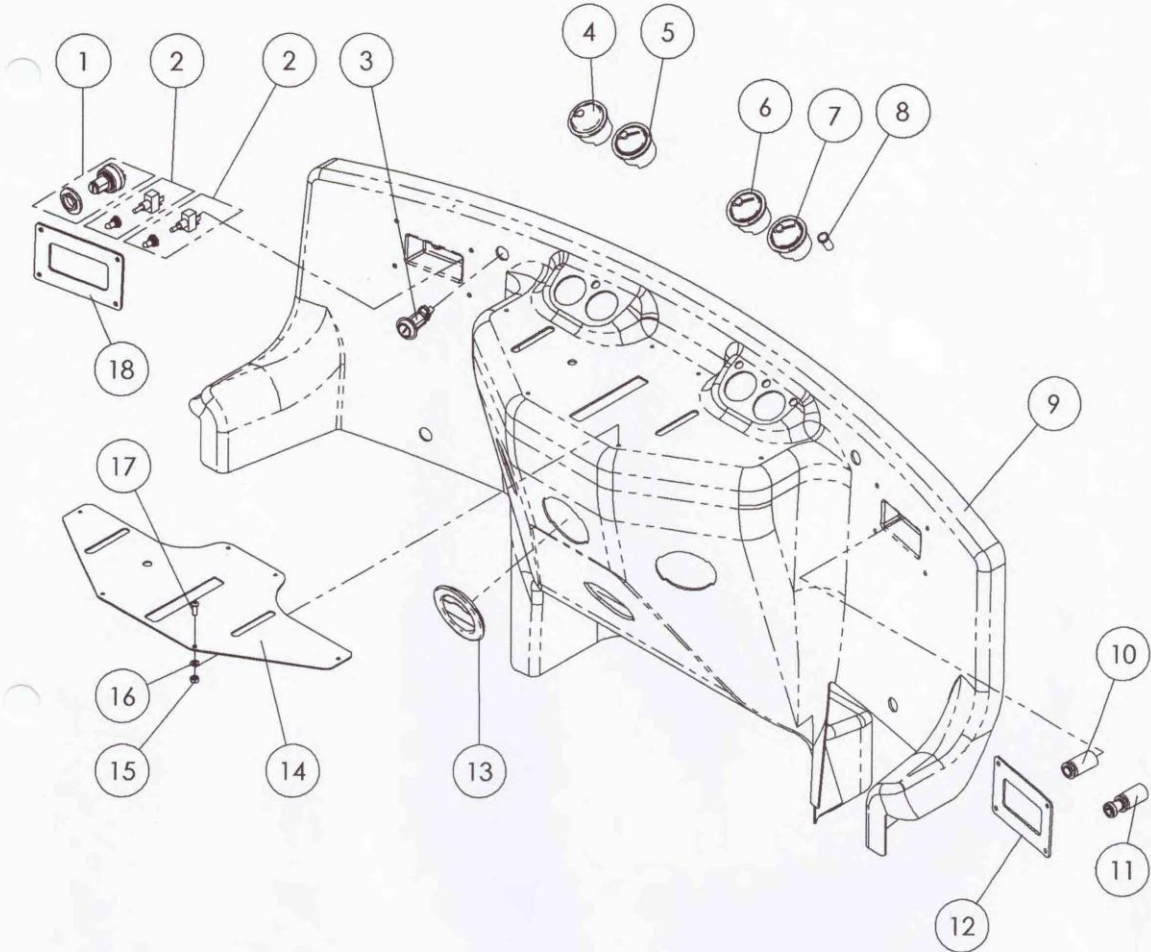
ITEM NO.	QTY.	PART NO.	DESCRIPTION	ITEM NO.	QTY.	PART NO.	DESCRIPTION
1	1	30636701	DRIVE KEY, ENGINE COUPLING	12	4	LKN5/16-18G8YZ	5/16-18 GRADE 8 METAL LOCK NUT
2	1	89800000	ENGINE	13	1	98910000	CLUTCH
3	2	HCS5/16-18X1.375G8YZ	5/16-18 X 1-3/8" GRADE 8 HEX SCREW	14	2	SW7/16Z	7/16 SPLIT LOCK WASHER
4	9	WSAE5/16Z	5/16 SAE WASHER	15	1	HCS5/16-18X1.5G8Z	5/16-18 X 1-1/2" GRADE 8 HEX SCREW
5	1	81686810	WELDMENT, ALTERNATOR MOUNT	16	4	81736201	DRIVE SHIM
6	10	SWS/16Z	5/16 SPLIT LOCK WASHER	17	4	88202504	SPACER, DRIVE SHIM
7	4	HCS5/16-18X1Z	5/16-18 X 1" HEX SCREW	18	1	WSAE7/16Z	7/16 SAE WASHER
8	1	88215400	TRANSMISSION	19	1	HCS7/16-14X1G8YZ	7/16-14 X 1" GRADE 8 HEX SCREW
9	1	HCS5/16-18X1.25Z	5/16-18 X 1-1/4" HEX SCREW	20	1	81686801	ALTERNATOR
10	1	HCS7/16-14X2.25G8YZ	7/16-14 X 2-1/4 GRADE 8 HEX SCREW	21	1	HCS5/16-24X.75Z	5/16-24 X 3/4" HEX SCREW
11	1	989100001	LOCATING WASHER, CLUTCH	22	1	81686805	BRACKET-PIVOT ALTERNATOR

## T-HANDLE AND LINKAGE

ITEM NO.	QTY.	PART NO.	DESCRIPTION
1	8	82222100	BALL JOINT
2	1	N3/8-24Z	3/8-24 STANDARD NUT
3	2	82130101	ROD SPACER
4	4	W3/8Z	3/8 STANDARD WASHER
5	2	82089601	SPRING, LINKAGE
6	2	88210300	CONTROL ROD
7	1	WN3/8Z	3/8 NARROW WASHER
8	2	LKN3/8-16Z	3/8-16 METAL LOCK NUT
9	1	88210500	WELDMENT, CONTROL ROD, SHORT
10	1	88210700	ASSEMBLY, CONTROL ROD, RIGHT
11	1	88210600	ASSEMBLY, CONTROL ROD, LEFT
12	1	82087110	CHOKE CABLE
13	2	90000404	THREADED ROD, CONTROLS
14	2	82120901	HANDLE, CONTROLS
15	1	SW5/16Z	5/16 SPLIT LOCK WASHER
16	1	N5/16Z	5/16 STANDARD NUT
17	1	88221500	WELDMENT, T-HANDLE
18	2	JN1/2-13Z	1/2-13 JAM NUT
19	2	82062902	FLANGED BUSHING, T-HANDLE
20	2	82062903	NYLON WASHER, T-HANDLE
21	2	82062801	BEARING, T-HANDLE
22	1	82108201	BRACKET, T-HANDLE PIVOT
23	1	HCS1/4-20X.5Z	1/4-20 X 1/2" HEX SCREW
24	1	88221800	WELDMENT, REVERSE BRACKET
25	1	82120201	SPACER, CONTROL PIVOT
26	1	HCS1/2-13X5Z	1/2-13 X 5" HEX SCREW
27	5	W1/4Z	1/4 STANDARD WASHER
28	5	LKN1/4-20Z	1/4-20 METAL LOCK NUT
29	6	LKN3/8-24Z	3/8-24 METAL LOCK NUT
30	1	HCS5/16-18X3.5Z	5/16-18 X 3-1/2" HEX SCREW
31	3	WN5/16Z	5/16 NARROW WASHER
32	1	WN1/4Z	1/4 NARROW WASHER
33	4	81830601	BEARING, REVERSE PIVOT
34	1	82123801	PIVOT ROD, REVERSE LOCKOUT
35	3	CP1/8X1Z	1/8 X 1" COTTER PIN
36	1	82122401	ROD, REVERSE LOCKOUT
37	1	80544401	SPRING, REVERSE LOCKOUT
38	1	82141001	KNOB, REVERSE LOCKOUT
39	1	90000500	WELDMENT, LINKAGE SUPPORT
40	2	LKN5/16-18Z	5/16-18 METAL LOCK NUT
41	2	W5/16Z	5/16 STANDARD WASHER
42	2	90000200	ASSEMBLY, EXTENSION LINKAGE
43	4	90000203	BUSHING, EXTENSION LINKAGE
44	2	SB3/8-16X1.25	3/8-16 X 1-1/4" SHOULDER BOLT
45	1	82087100	THROTTLE CABLE
46	2	82087103	KNOB, CHOKE/THROTTLE CABLE
47	1	88210400	WELDMENT, CONTROL ROD, LONG

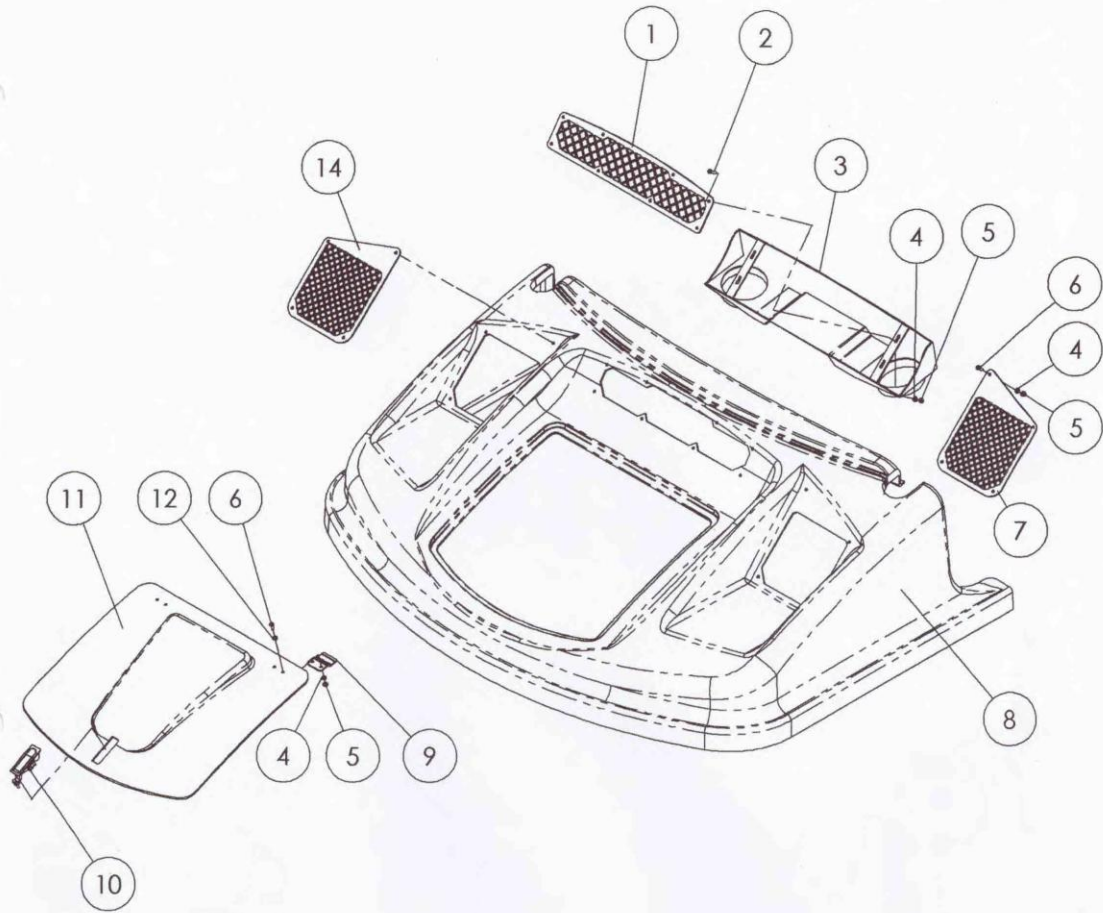






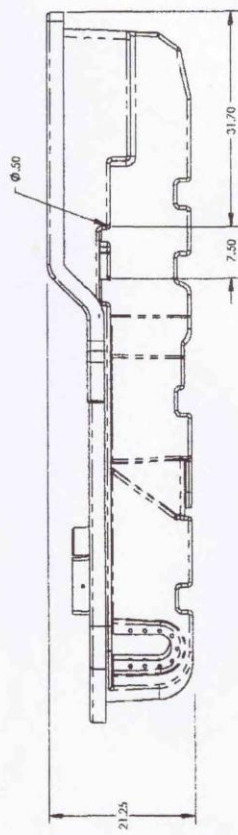
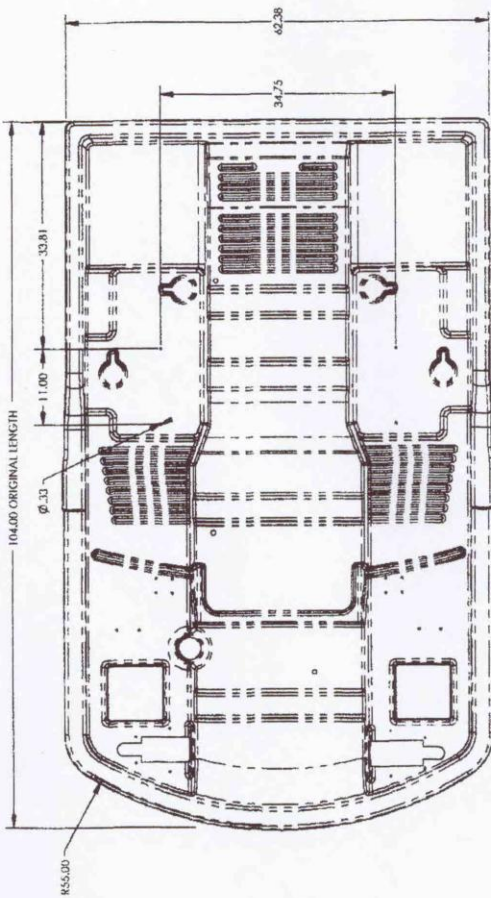
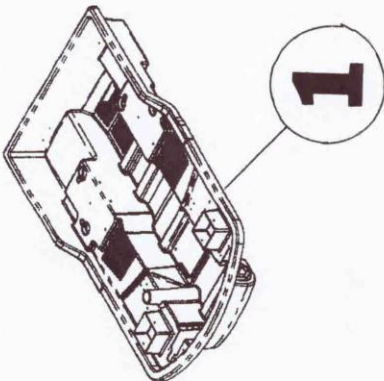
## DASH ASSEMBLY

ITEM NO.	QTY.	PART NO.	DESCRIPTION
1	1	82118102	IGNITION SWITCH
2	2	87310001	TOGGLE SWITCH
3	4	82128002	LATCH, DASH
4	1	81676401	TACHOMETER
5	1	81676404	VOLTMETER
6	1	81676403	TRANSMISSION OIL TEMP (250F/120C)
7	1	81676402	ENGINE OIL PRESSURE (80 PSI)
8	4	87310008	WARNING LIGHT
9	1	82128001	DASHBOARD
10	1	88265504	12V POWERPOINT
11	1	88265503	LIGHTER
12	1	81000102	PANEL, POWERPOINT
13	1	91000122	HEAT VENT, CIRCULAR, GRAY
14	1	81000101	DASH PLATE
15	14	LKN1/4-20Z	1/4-20 METAL LOCK NUT
16	14	WSAE1/4Z	1/4 SAE WASHER
17	14	BHSCS1/4-20X.75BKZ	1/4-20 X 3/4" BUTTION HEAD SOCKET CAP SCREW - BLACK
18	1	81000102	PANEL, IGNITION



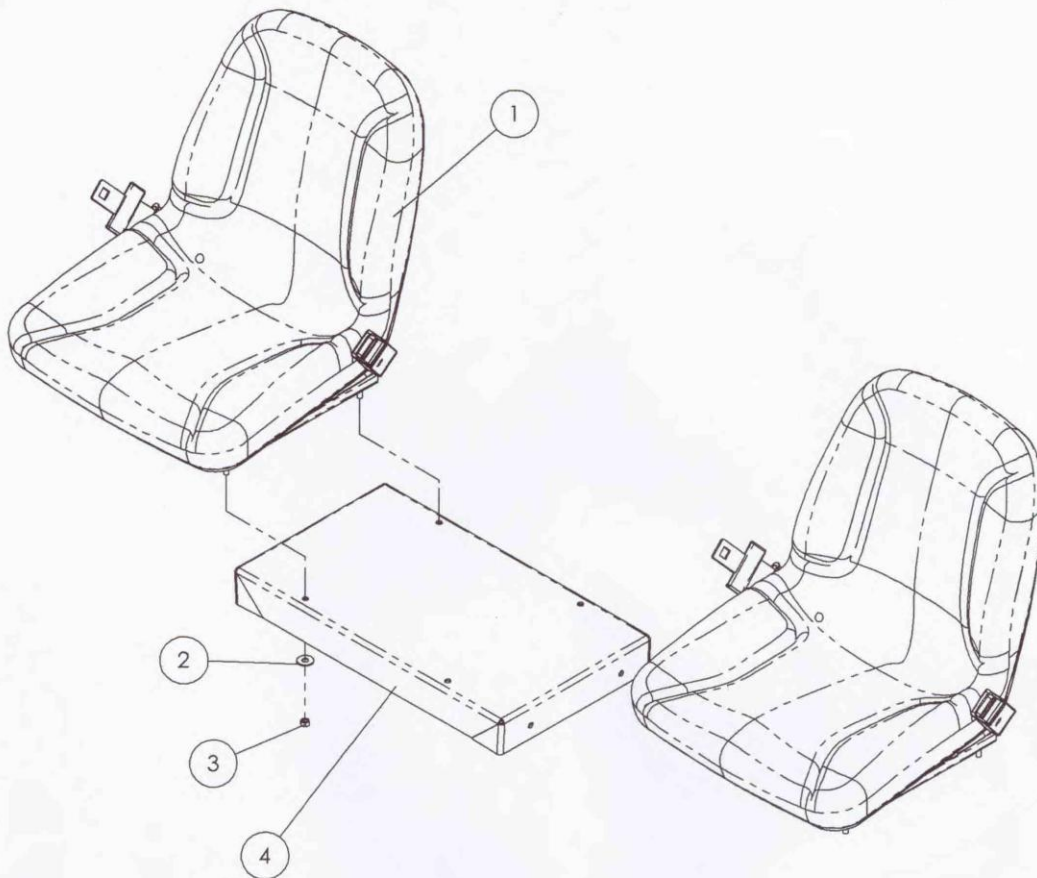
## BODY ASSEMBLY

ITEM NO.	QTY.	PART NO.	DESCRIPTION
1	1	82124102	GRILL, AIR INTAKE
2	4	BHSCS1/4-20X1BKZ	1/4-20 X 1" BUTTON HEAD SOCKET CAP SCREW, BLACK
3	1	91000120	WELDMENT, AIR INTAKE
4	20	WSAE1/4Z	1/4 SAE WASHER
5	20	NY1/4-20Z	1/4-20 NYLOCK NUT
6	16	BHSCS1/4-20X.75BKZ	1/4-20 X 3/4" BUTTON HEAD SOCKET CAP SCREW, BLACK
7	1	82124103	GRILL, LEFT OIL COOLER
8	1	88280502	BODY
9	2	88280601	BRACKET, HOOD MOUNT
10	1	88280602	LATCH, HOOD
11	1	88280503	HOOD
12	4	WSAE1/4BKZ	1/4 SAE WASHER, BLACK
13	1	82124101	GRILL, RIGHT OIL COOLER



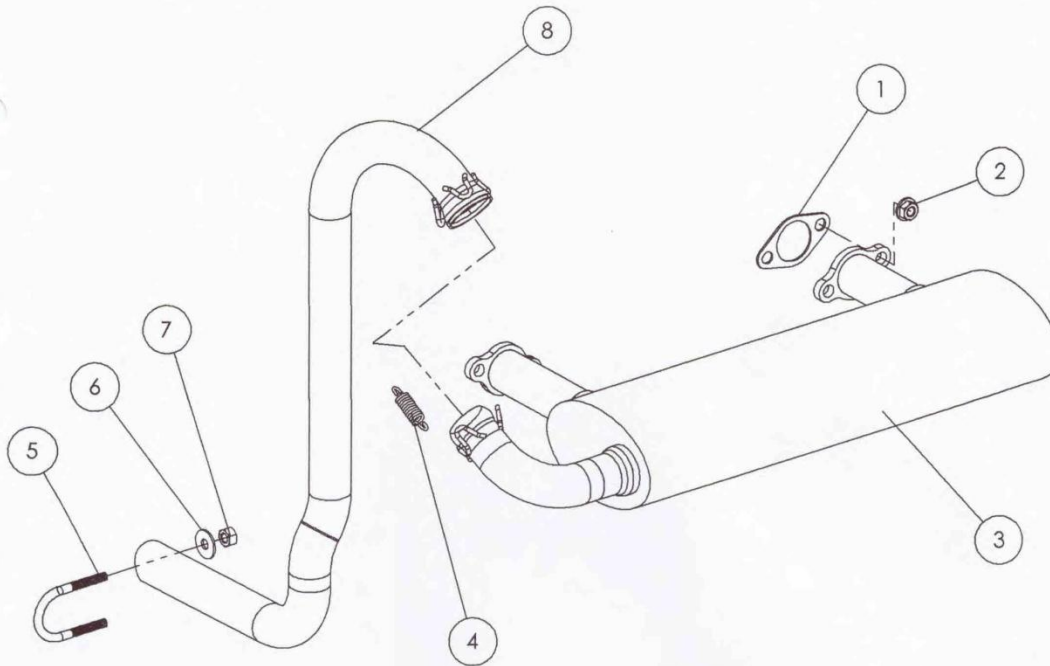
<b>1</b>	TUB
	PART NO: 82123601    MATL: FIBERGLASS





## FRONT SEAT ASSEMBLY

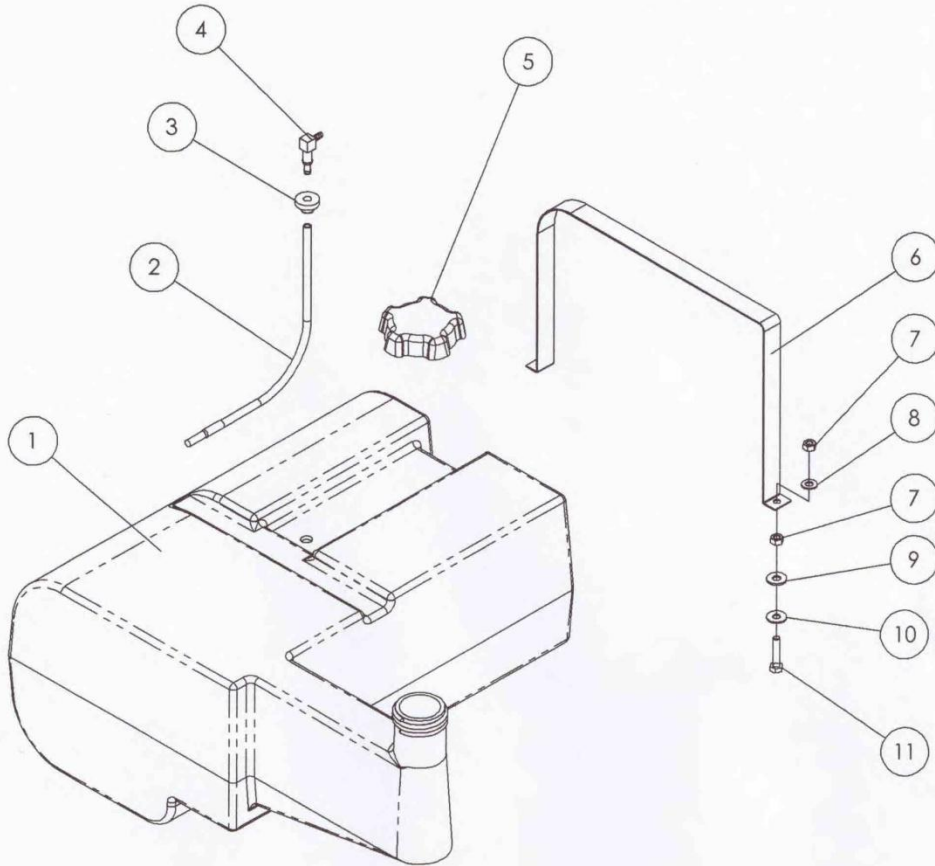
ITEM NO.	QTY.	PART NO.	DESCRIPTION
1	2	88222500	SEAT-FRONT
2	4	WG/8Z	3/8 STANDARD WASHER
3	4	LKN3/8-16Z	3/8-16 METAL LOCK NUT
4	1	92000005	BRACKET, SEAT



## EXHAUST ASSEMBLY

ITEM NO.	QTY.	PART NO.	DESCRIPTION
1	2	11352601	GASKET, EXHAUST
2	4	88208110	NUT, EXHAUST
3	1	88208100	WELDMENT, MUFFLER
4	3	88207107	SPRING, EXHAUST
5	2	82183401	U-BOLT, EXHAUST
6	4	82142603	5/16 SEALING WASHER
7	4	LKN5/16-18Z	5/16-18 METAL LOCK NUT
8	1	82087301	TAILPIPE

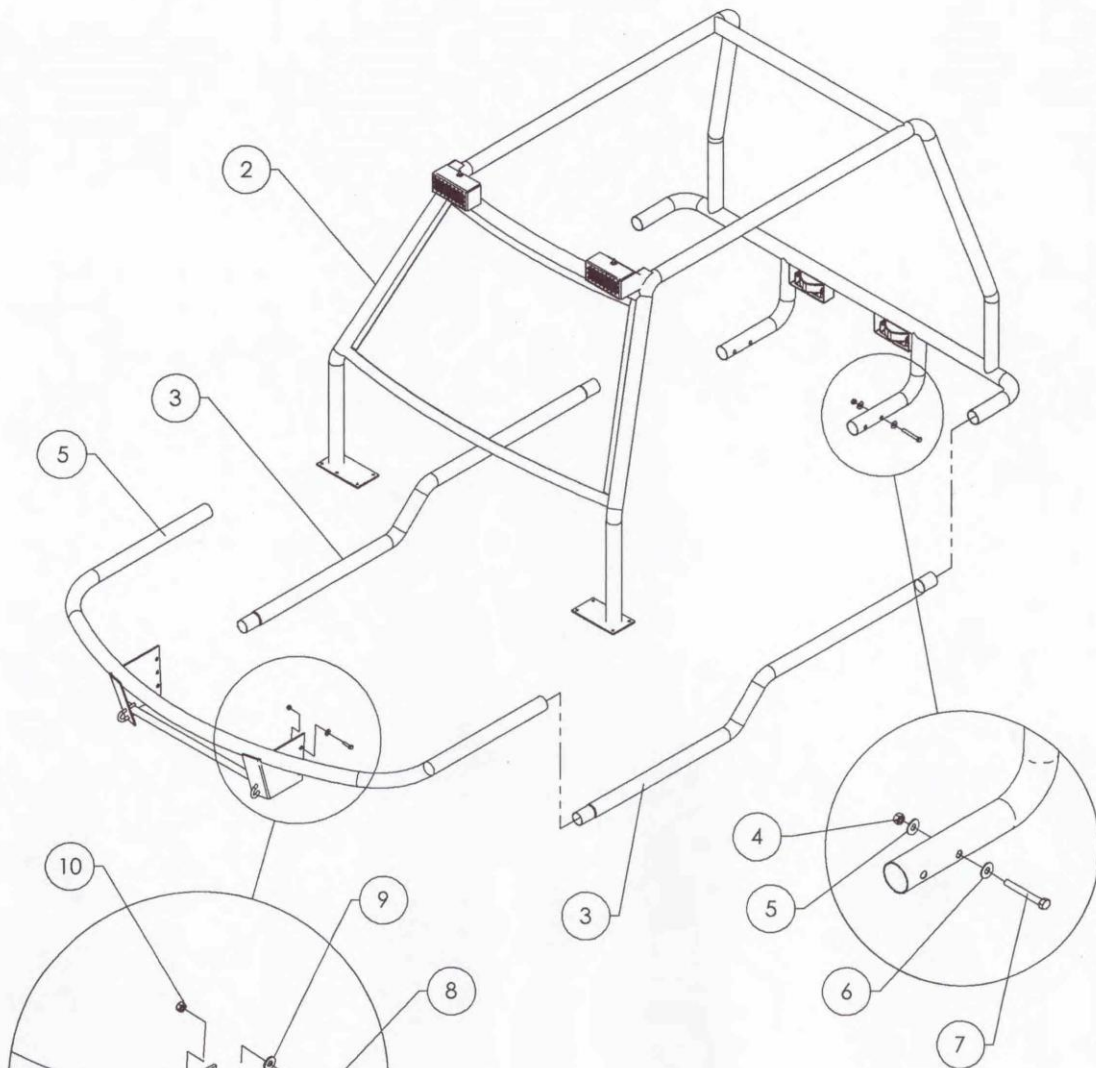
Note: All new models contain an exhaust thermal blanket between exhaust pipe and fiberglass body. Part No. 999999



## FUEL TANK ASSEMBLY

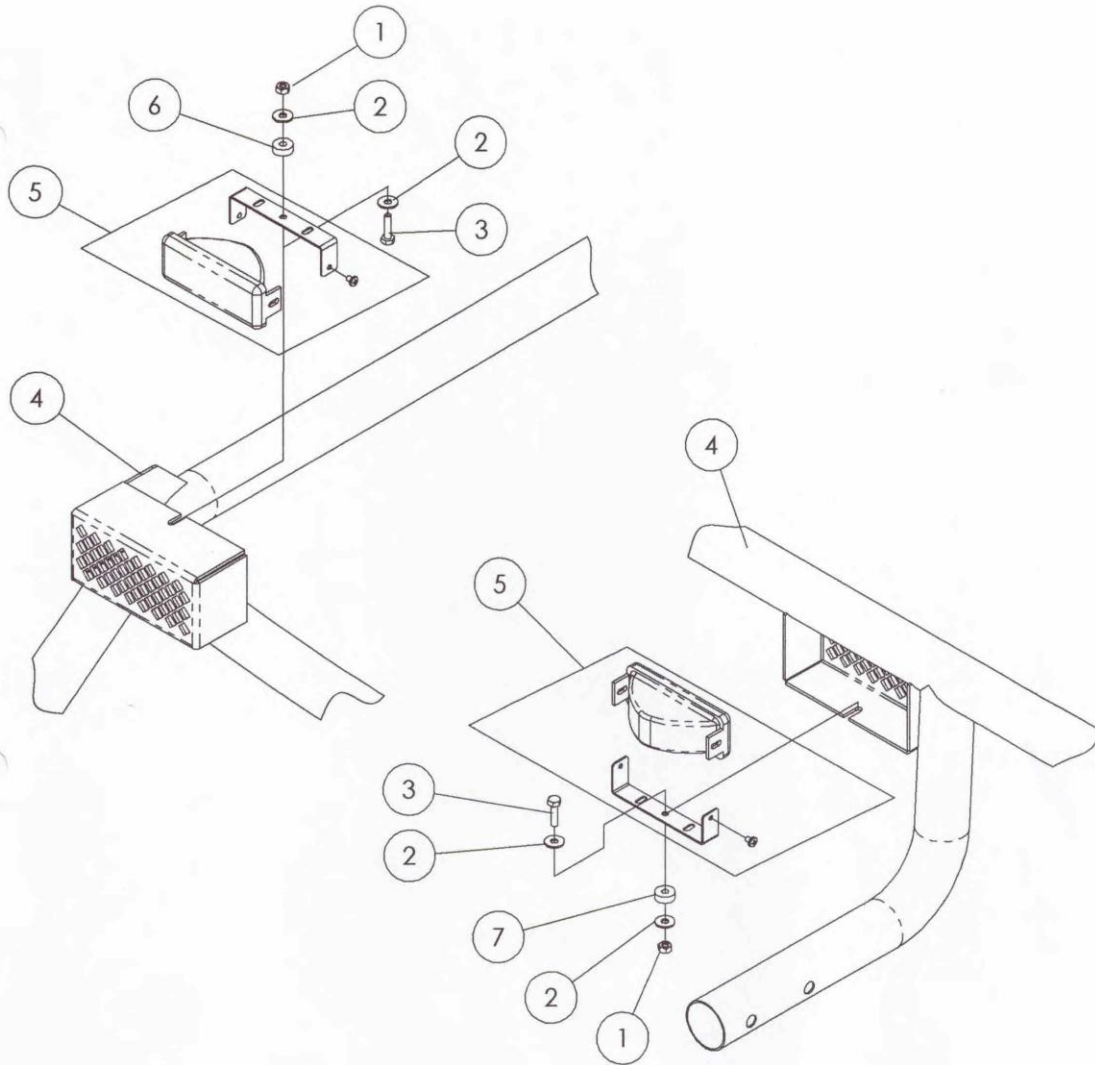
ITEM NO.	QTY.	PART NO.	DESCRIPTION
1	1	88204301	FUEL TANK
2	1	82145801	FUEL PICKUP HOSE
3	1	82125001	SEALING WASHER, FUEL TANK
4	1	82139601	FITTING, FUEL TANK
5	1	88254001	CAP, FUEL TANK
6	1	82106101	BAND, FUEL TANK HOLD-DOWN
7	2	LKN5/16-18Z	5/16-18 METAL LOCK NUT
8	2	WN5/16Z	5/16 NARROW WASHER
9	2	W5/16Z	5/16 STANDARD WASHER
10	2	82142602	5/16 SEALING WASHER
11	2	HCS5/16-18X1.25	5/16-18 X 1-1/4" HEX SCREW





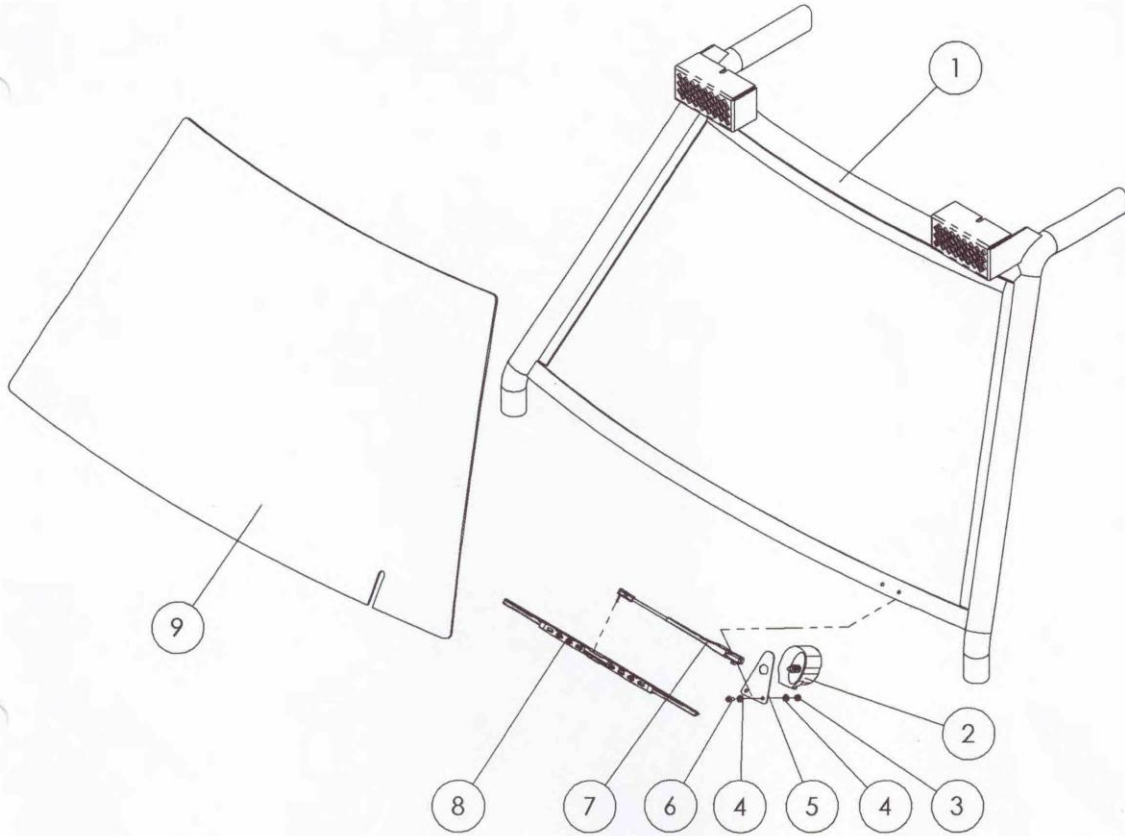
## BRUSH GUARD ASSEMBLY

ITEM NO.	QTY.	PART NO.	DESCRIPTION
1	1	88110200	WELDMENT, FRONT BUMPER
2	1	88110100	WELDMENT, BRUSH GUARD CAGE
3	2	88100002	LOWER SIDE TUBE, BRUSH GUARD
4	4	LKN3/8-16Z	3/8-16 METAL LOCK NUT
5	4	82142604	3/8 SEALING WASHER
6	4	W3/8Z	3/8 STANDARD WASHER
7	4	HCS3/8-16X3Z	3/8-16 X 3" HEX HEAD SCREW
8	6	HCS5-16-1.25Z	5/16-16 X 1-1/4" HEX HEAD SCREW
9	6	82142603	5/16 SEALING WASHER
10	6	LKN5/16Z	5/16 METAL LOCK NUT



## LIGHT ASSEMBLIES

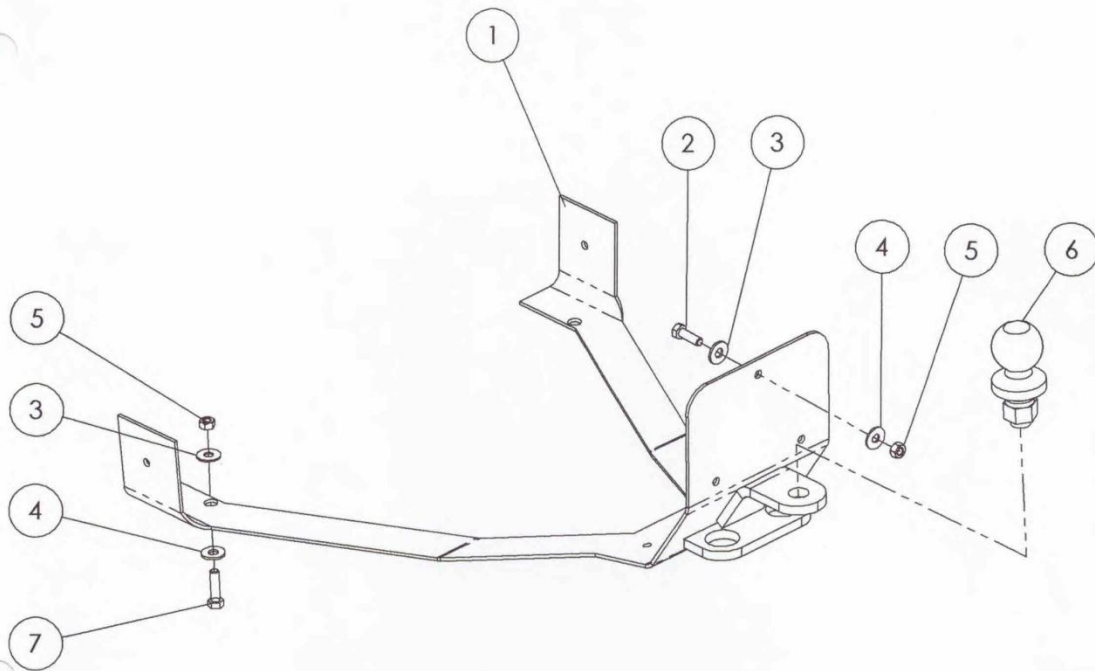
ITEM NO.	QTY.	PART NO.	DESCRIPTION
1	2	LKN1/4-20Z	1/4-20 METAL LOCK NUT
2	4	W1/4Z	1/4 STANDARD WASHER
3	1	HCS1/4-20X1Z	1/4-20 X 1" HEX SCREW
4	1	88100000	WELDMENT, BRUSH GUARD
5	2	82118000	LIGHT ASSEMBLY, CLEAR
6	2	82118023	SPACER, LIGHT



## WINDSHIELD & WIPER ASSEMBLY

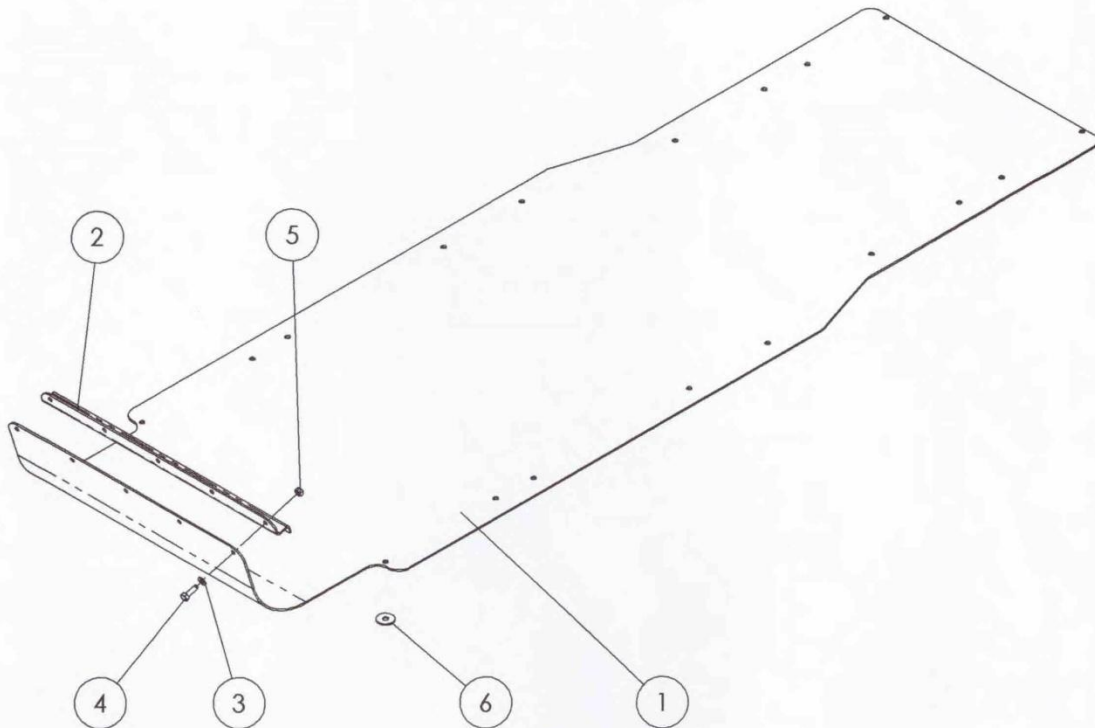
ITEM NO.	QTY.	PART NO.	DESCRIPTION
1	1	88110100	WELDMENT, BRUSH GUARD
2	1	82203313	WIPER MOTOR
3	2	NY1/4-20BKZ	1/4-20 NYLOCK NUT, BLACK
4	4	WSAE1/4BKZ	1/4 SAE WASHER, BLACK
5	1	82203304	BRACKET, WIPER MOTOR
6	1	BHSCS1/4-20X.75BKZ	1/4-20 X 3/4" BUTTON SOCKET HEAD SCREW, BLACK
7	1	82203310	WIPER ARM
8	1	82203314	20" WIPER BLADE
9	1	82203301	WINDSHIELD





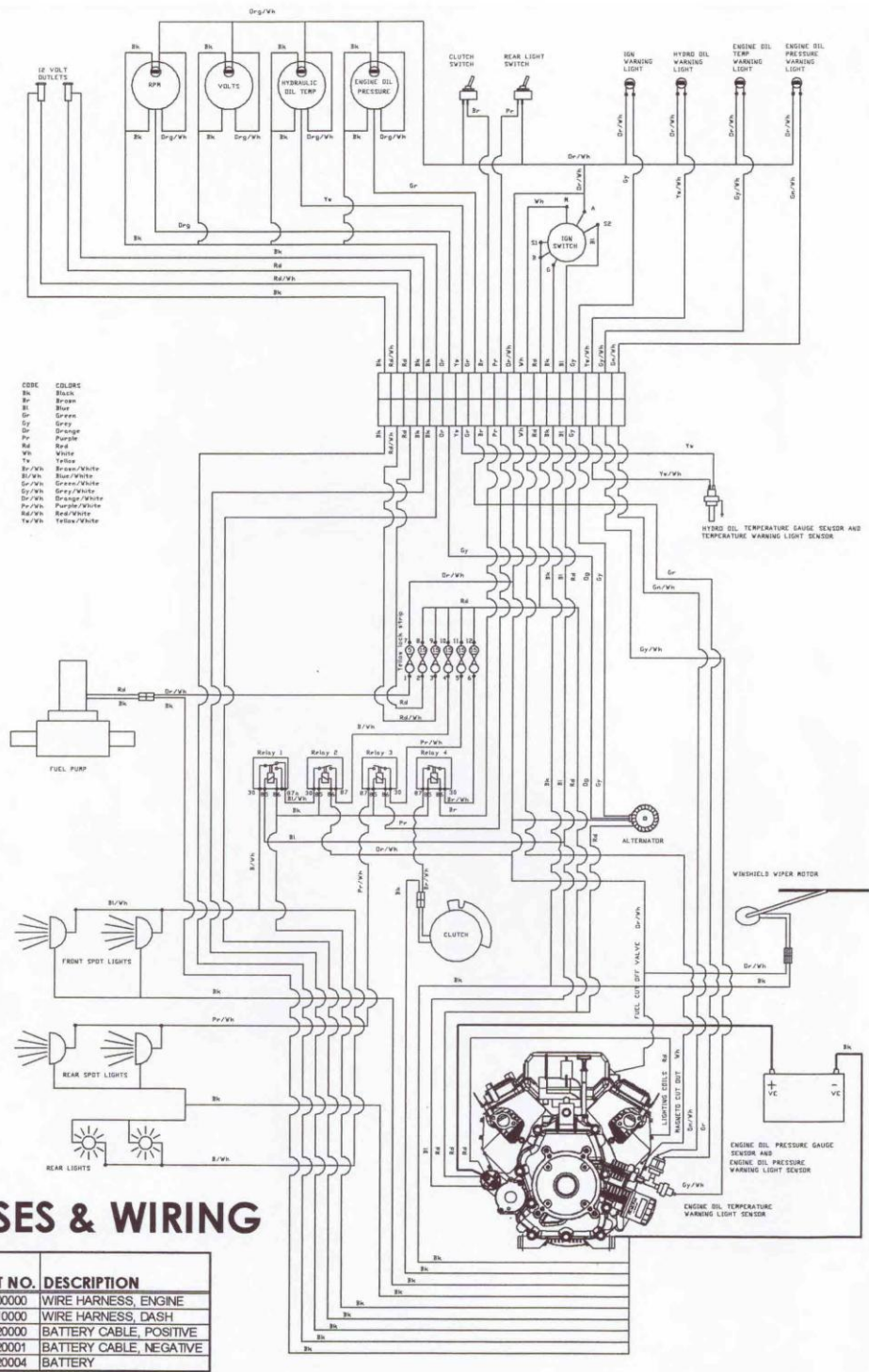
## TOW HITCH

ITEM NO.	QTY.	PART NO.	DESCRIPTION
1	1	88211001	WLDMNT, TRAILER HITCH MOUNT
2	3	HCS5/16-18X1Z	5/16-18 X 1" HEX SCREW
3	5	82142603	5/16 SEALING WASHER
4	5	W5/16Z	5/16 STANDARD WASHER
5	5	LKN5/16-18Z	5/16-18 METAL LOCK NUT
6	1	88211004	1-7/8" HITCH BALL
7	2	HCS5/16-18X1.25Z	5/16-18 X 1-1/4" HEX SCREW



## SKID PLATE

ITEM NO.	QTY.	PART NO.	DESCRIPTION
1	1	82196401	SKID PLATE
2	1	82196501	BRACKET-SKID PLATE
3	5	WN5/16Z	5/16 NARROW WASHER
4	5	HCS5/16-18X1Z	5/16-18 X 1" HEX SCREW
5	5	LKN5/16-18Z	5/16-18 METAL LOCK NUT
6	6	82142603	5/16 SEALING WASHER



## HARNESSES & WIRING

ITEM NO.	QTY.	PART NO.	DESCRIPTION
1	1	8730000	WIRE HARNESS, ENGINE
2	1	8731000	WIRE HARNESS, DASH
3	1	8732000	BATTERY CABLE, POSITIVE
4	1	8732001	BATTERY CABLE, NEGATIVE
5	1	8732004	BATTERY